



NEW YORK STOCK EXCHANGE

**U.S. EXCHANGE TRADED FUNDS
MONTHLY FLASH**

SEPTEMBER 2017

NYSE ARCA U.S. EXCHANGE TRADED FUNDS (ETFs)

HIGHLIGHTS FROM SEPTEMBER 2017

- In September, **16 new ETFs¹** listed on NYSE Arca
 - At the end of September, **1,451 ETFs** were listed on NYSE Arca
- US ETP notional volume represented **24.53%** of all CTA issues in September 2017
- US ETP daily average turnover was approximately **\$66.34** billion in September 2017
- NYSE Arca was at the NBBO **91.92%** of the time, leading all US exchanges
- NYSE Arca had **22.70%** of all US ETP trading volume, leading all US exchanges

¹ETFs include all exchange traded products

NYSE ARCA U.S. EXCHANGE TRADED FUNDS (ETFs)

Top 10 Most Actively Traded Securities in the U.S (by Turnover Volume) September

Symbol	Name	Product Type	Consolidated Trading Volume	Consolidated Turnover Volume (\$)	Average Daily Trading Volume	Average Daily Turnover Volume (\$)
SPY	SPDR S&P 500 ETF Trust	ETF	1,286,405,280	\$320,233,692,976	64,320,264	\$16,011,684,649
AAPL	Apple Inc.	Stock	680,442,092	\$107,073,964,701	34,022,105	\$5,353,698,235
QQQ	PowerShares QQQ Trust, Series 1	ETF	632,248,250	\$91,642,313,704	31,612,413	\$4,582,115,685
IWM	iShares Russell 2000 ETF	ETF	488,888,410	\$70,064,143,952	24,444,421	\$3,503,207,198
NVDA	Nvidia Corp	Stock	361,216,519	\$63,735,932,644	18,060,826	\$3,186,796,632
BABA	Alibaba Group Holding Limited	Stock	363,936,427	\$63,298,766,052	18,196,821	\$3,164,938,303
AMZN	Amazon.Com Inc	Stock	59,407,011	\$57,544,410,032	2,970,351	\$2,877,220,502
FB	Facebook, Inc. Class A	Stock	304,828,762	\$51,702,650,435	15,241,438	\$2,585,132,522
EEM	iShares MSCI Emerging Markets ETF	ETF	1,069,823,018	\$48,208,764,376	53,491,151	\$2,410,438,219
TSLA	Tesla, Inc. Common Stock	Stock	111,525,988	\$40,066,839,197	5,576,299	\$2,003,341,960

Top 10 Most Actively Traded ETFs in the U.S. (by Turnover Volume) in September

SPY	SPDR S&P 500 ETF Trust	ETF	1,286,405,280	\$320,233,692,976	64,320,264	\$16,011,684,649
QQQ	PowerShares QQQ Trust, Series 1	ETF	632,248,250	\$91,642,313,704	31,612,413	\$4,582,115,685
IWM	iShares Russell 2000 ETF	ETF	488,888,410	\$70,064,143,952	24,444,421	\$3,503,207,198
EEM	iShares MSCI Emerging Markets ETF	ETF	1,069,823,018	\$48,208,764,376	53,491,151	\$2,410,438,219
XLF	Financial Select Sector SPDR Fund	ETF	1,169,102,529	\$29,072,942,995	58,455,126	\$1,453,647,150
VXX	iPath S&P 500 VIX Short-Term Futures ETN due 1/30/2019	ETN	563,844,730	\$24,850,976,636	28,192,237	\$1,242,548,832
TLT	iShares 20+ Year Treasury Bond ETF	ETF	191,950,714	\$24,349,359,489	9,597,536	\$1,217,467,974
GDX	VanEck Vectors Gold Miners ETF	ETF	919,329,439	\$22,238,467,385	45,966,472	\$1,111,923,369
GLD	SPDR Gold Trust, SPDR Gold Shares	ETV	174,234,304	\$21,788,912,960	8,711,715	\$1,089,445,648
EFA	iShares MSCI EAFE ETF	ETF	307,521,439	\$20,857,819,864	15,376,072	\$1,042,890,993

NYSE ARCA U.S. EXCHANGE TRADED FUNDS (ETFs)

New ETPs Launched on NYSE Arca in September (con't)

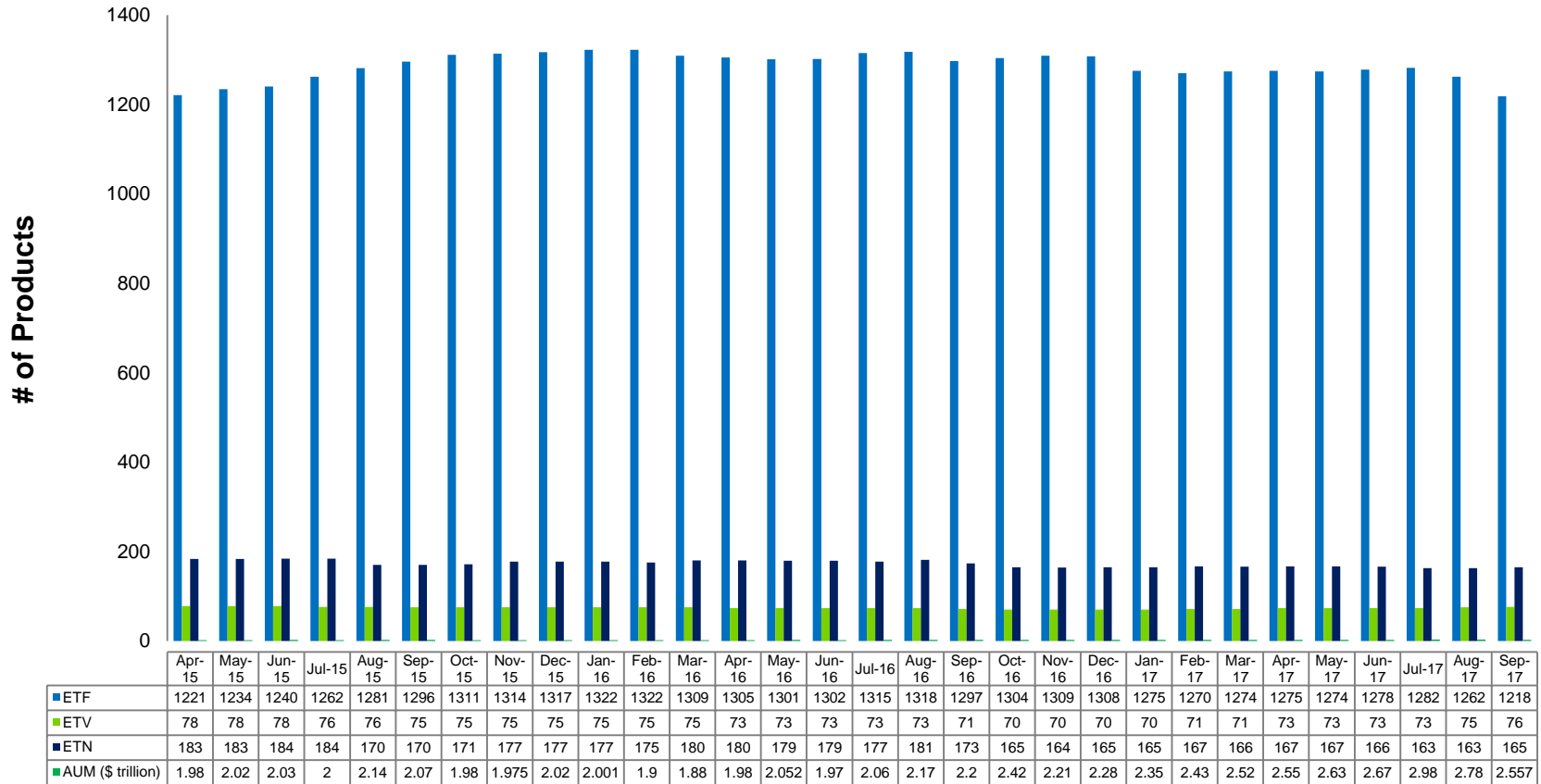
Symbol	Listing Date	Name	Product Type	Consolidated Trading Volume	Consolidated Turnover Volume (\$)	Average Daily Trading Volume	Average Daily Turnover Volume (\$)
HTRB	9/28/2017	Hartford Total Return Bond ETF	ETF	495,100	19,828,755	247,550	\$9,914,378
BSCR	9/27/2017	Guggenheim BulletShares 2027 Corporate Bond ETF	ETF	18,530	370,558	6,177	\$123,519
BSJP	9/27/2017	Guggenheim BulletShares 2025 High Yield Corporate Bond ETF	ETF	4,453	111,633	1,484	\$37,211
MXDU	9/18/2017	Nationwide Maximum Diversification U.S. Core Equity ETF	ETF	56,956	1,413,732	5,696	\$141,373
RBIN	9/18/2017	Nationwide Risk-Based International Equity ETF	ETF	11,504	288,990	1,150	\$28,899
RBUS	9/18/2017	Nationwide Risk-Based U.S. Equity ETF	ETF	29,500	735,404	2,950	\$73,540
UBRT	9/15/2017	Credit Suisse AxelaTrader 3x Long Brent Crude Oil ETN	ETN	900	98,422	82	\$8,947
DBRT	9/15/2017	Credit Suisse AxelaTrader 3x Inverse Brent Crude Oil ETN	ETN	203	20,130	18	\$1,830

NYSE ARCA U.S. EXCHANGE TRADED FUNDS (ETFs)

New ETPs Launched on NYSE Arca in September

Symbol	Listing Date	Name	Product Type	Consolidated Trading Volume	Consolidated Turnover Volume (\$)	Average Daily Trading Volume	Average Daily Turnover Volume (\$)
IBDS	9/14/2017	iShares iBonds Dec 2027 Term Corporate ETF	ETF	26,606	661,452	2,217	\$55,121
OBOR	9/8/2017	Kraneshares MSCI One Belt One Road Index ETF	ETF	215,325	5,352,805	13,458	\$334,550
GHYB	9/7/2017	Goldman Sachs Access High Yield Corporate Bond ETF	ETF	58,182	2,908,527	3,422	\$171,090
MFUS	9/6/2017	PIMCO RAFI Dynamic Multi-Factor U.S. Equity ETF	ETF	80,403	2,054,548	4,467	\$114,142
MFEM	9/6/2017	PIMCO RAFI Dynamic Multi-Factor Emerging Markets Equity ETF	ETF	45,477	1,136,105	2,527	\$63,117
MFDX	9/6/2017	PIMCO RAFI Multi-Factor International Equity ETF	ETF	86,553	2,208,479	4,809	\$122,693
FLMI	9/5/2017	Franklin Liberty Intermediate Municipal Opportunities ETF	ETF	1,731	43,283	91	\$2,278
FLMB	9/5/2017	Franklin Liberty Municipal Bond ETF	ETF	101	2,531	5	\$133

NYSE ARCA U.S. EXCHANGE TRADED FUNDS (ETFs)



- As of September 2017, 2,032 ETFs were listed in the U.S., 1,451 of which were listed on NYSE Arca
- NYSE Arca listed ETFs have a total AUM of approximately \$2.61 trillion

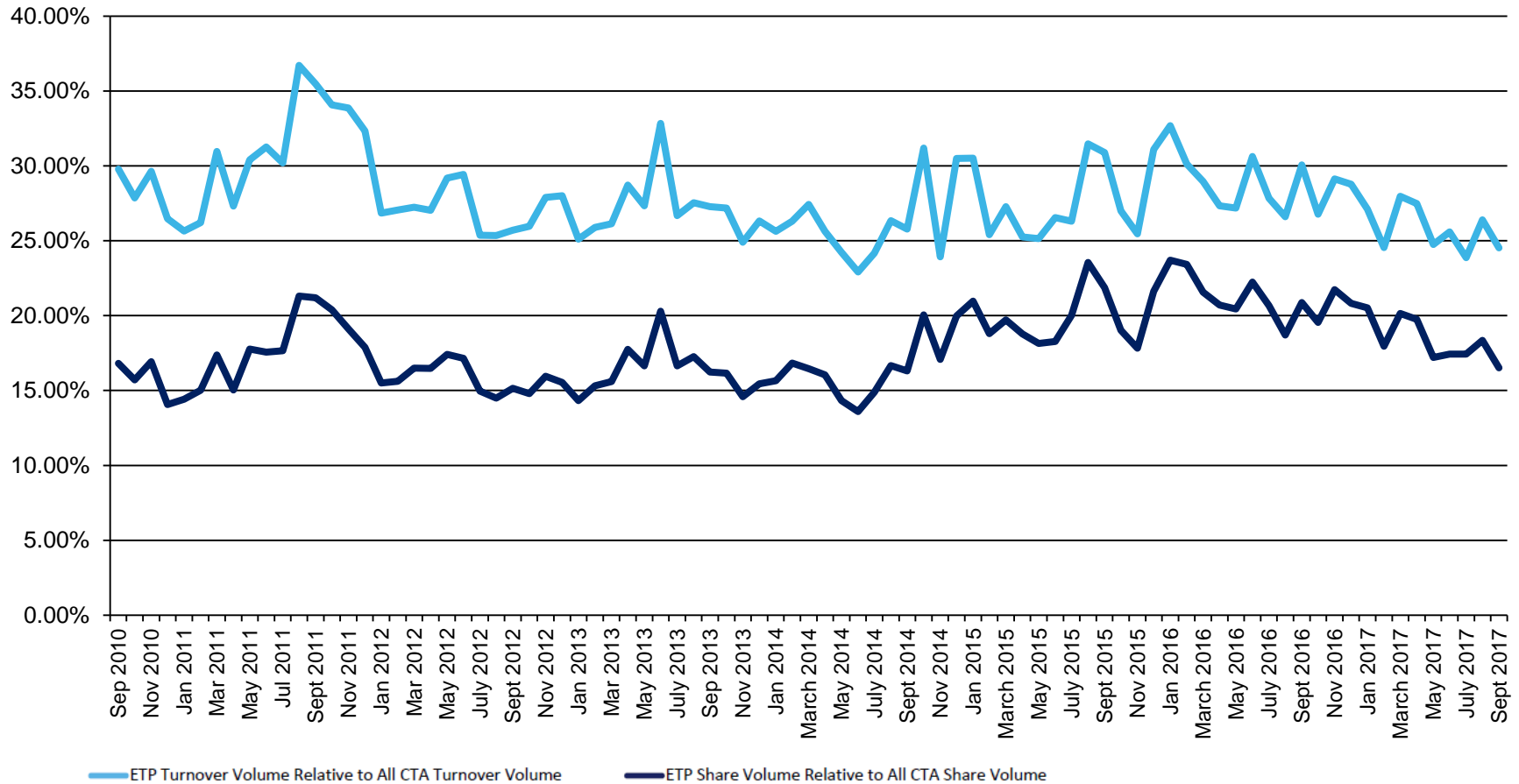
NYSE ARCA ETFs (BY ISSUER)

Issuer	# of ETFs	New in September	New YTD	Turnover
Academy Funds	1			\$41,305,006
AdvisorShares	18		1	\$131,181,451
AlphaClone	2			\$2,751,220
ALPS	17			\$2,188,383,209
ARK	4			\$163,325,745
ArrowShares	2			\$12,952,367
Barclays	71		1	\$25,719,434,091
Cambria	3		1	\$56,076,496
Charles Schwab	21			\$6,211,085,681
Citigroup	3			\$405,594
ClearShares	1		1	\$12,381,094
Columbia Management	10			\$168,243,841
Credit Suisse	9	2(UBRT,DBRT)	2	\$61,103,828
CSOP	3			\$2,475,193
Deutsche Bank	28			\$2,499,133,663
db X-trackers	16			\$1,934,944,611
DeltaShares	4		4	\$115,094
Diamond Hill	1			\$2,993,005
Direxion Shares	75		8	\$34,189,850,402
ETF Managers Group	10			\$231,529,205
ETF Securities	8		3	\$321,477,851
Exchange Traded Concepts	7		1	\$564,659,616
Exponential ETFs	1		1	\$912,801
Fidelity	20			\$957,396,477
Fieldstone	2		2	\$2,831,959
FirstTrust	37		4	\$5,180,077,795
FlexShares	18			\$564,661,486
Franklin Templeton	10	2(FLMI,FLMB)	3	\$33,084,703
Global X	40			\$2,005,228,381
Goldman Sachs	2			\$3,090,526
Goldman Sachs Asset Management	10	1(GHYB)	3	\$446,126,068
GraniteShares	3		2	\$8,034,152
Guggenheim	79	2(BSCR,BSJP)	3	\$5,143,261,227
Hartford Funds	8	1(HTRB)	3	\$55,243,098
Horizons	1		1	\$3,752,528
IndexIQ	20		1	\$277,875,574
Inspire Investing	3		3	\$6,544,520
Invesco PowerShares	88		1	\$99,449,256,418

NYSE ARCA ETFs (BY ISSUER)

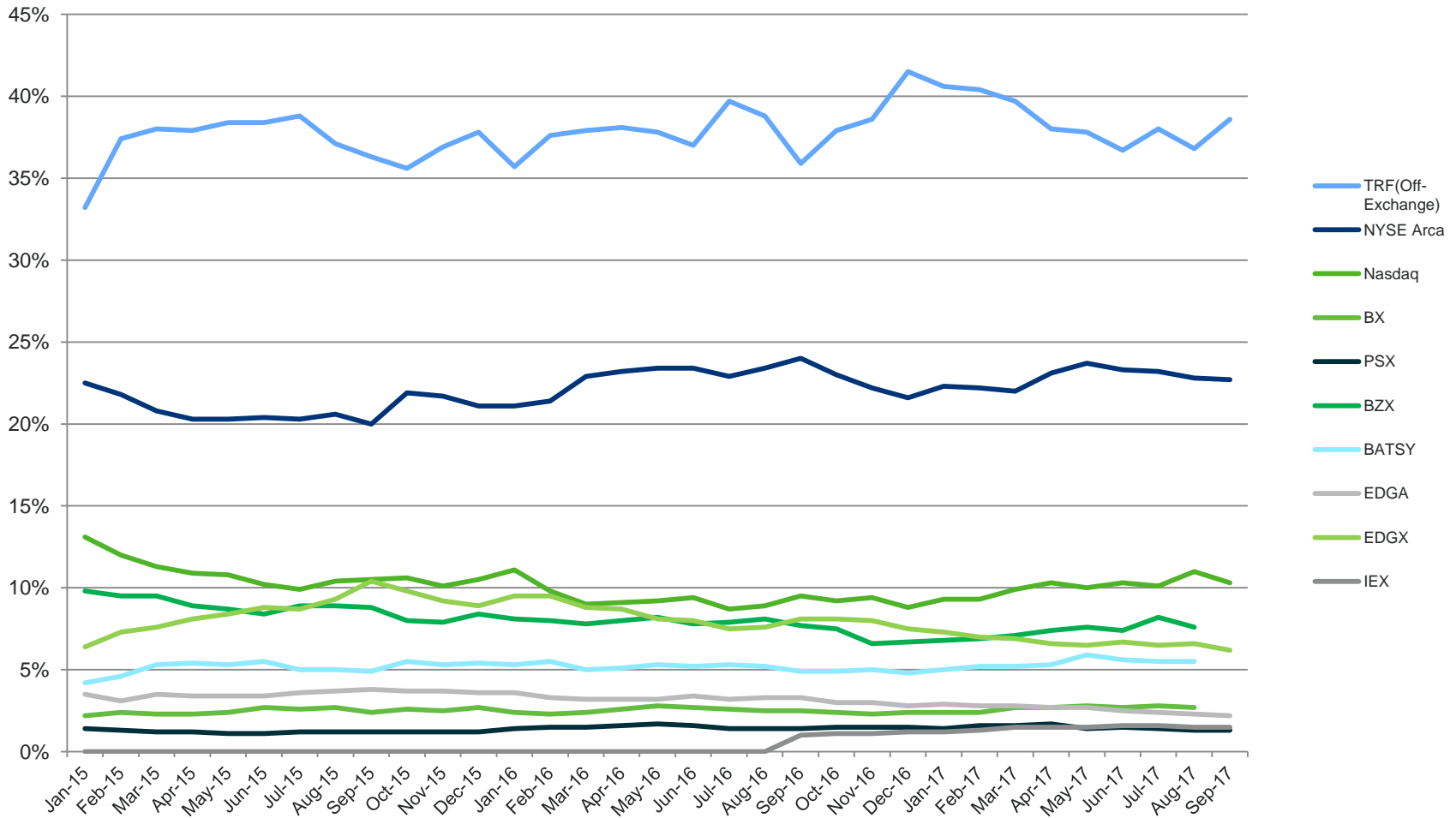
Issuer	# of ETFs	New in September	New YTD	Turnover
iShares	209	1(IBDS)	2	\$396,400,957,960
Janus	3			\$55,114,061
John Hancock	12			\$36,476,274
JPMorgan Chase & Co.	2		1	\$175,528,125
JP Morgan ETFs	10			\$987,555,268
Krane Shares	4	1(OBOR)	1	\$630,047,595
LocalShares	1			\$172,016
Merk	1			\$34,563,977
Morgan Stanley	5			\$2,733,332
Nationwide	3	3(RBUS,RBIN,MXDM)	3	\$2,438,126
Natixis	1			\$761,060
Nuveen	2		1	\$8,885,986
Oppenheimer	7			\$145,257,125
O'Shares	7		1	\$37,511,256
PIMCO	15	3(MFDX,MFEM,MFUS)	3	\$1,952,626,705
Principal	1			\$4,069,638
ProShares	109		2	\$56,826,609,895
QuantShares	5			\$2,338,815
RealityShares	1			\$12,031,696
Reaves	1			\$418,930
Renaissance Capital	2			\$1,510,015
RexShares	1			\$15,485,608
SerenityShares	1		1	\$432,784
SPDR ETFs	128		1	\$521,514,897,267
Sprott Asset Management	6			\$188,723,016
Strategy Shares	2			\$5,730,114
Swedish Export Credit (SEK)	7			\$15,093,458
Teucrium	5			\$75,849,964
Tortoise	1			\$19,484,452
UBS	41		2	\$489,520,169
United States Commodity Funds LLC	15		2	\$4,798,757,448
U.S. Global Investors	2		1	\$40,091,728
VanEck Vectors	54		1	\$46,789,183,812
Vanguard	49			\$70,648,429,205
VelocityShares	9		2	\$28,271,760,273
Virtus ETF Solutions	8		3	\$172,434,887
WBI	12			\$35,757,344
WisdomTree	53		1	\$6,857,171,405

U.S. ETF CONSOLIDATED VOLUMES



- During the month of September, U.S. ETF CADV was 1.03 billion and daily notional value was \$66.34 billion
- By the end of September, U.S. ETF share and notional volume represented 16.51% and 24.53%, respectively of all CTA issues

U.S. ETF MARKET SHARE BY TRADING VENUE



- In September 2017, NYSE Arca led all exchanges with an ETF trading market share of 22.70%
- ETF trades occurring off-exchange in September represented 38.60%

CONTACT US

- For more information, visit www.nyse.com/etf
- Email us at: etf@nyse.com

©2017 NYSE. All rights reserved. NYSE and its affiliates do not recommend or make any representation as to possible benefits from any securities or investments, or third-party products or services. Investors should undertake their own due diligence regarding their securities and investment practices.