

March 2016

U.S. ETP Monthly Flash

NYSE Arca U.S. Exchange Traded Products (ETP)

Highlights from March 2016

- › In March, 10 new ETPs listed on NYSE Arca
 - At the end of March, 1,558 ETPs were listed on NYSE Arca
- › US ETP notional volume represented 28.96% of all CTA issues in March 2016
- › US ETP daily average turnover was approximately \$76.30 billion in March 2016
- › NYSE Arca was at the NBBO 92.04% of the time, leading all US exchanges
- › NYSE Arca had 23.60% of all US ETP trading volume, leading all US exchanges

NYSE Arca U.S. Exchange Traded Products (ETP)

Top 10 Most Actively Traded Securities in the U.S (by Turnover Volume) March

Symbol	Name	Product Type	Consolidated Trading Volume	Consolidated Turnover Volume (\$)	Average Daily Trading Volume	Average Daily Turnover Volume (\$)
SPY	SPDR S&P 500 ETF Trust	ETF	2,399,233,075	\$484,044,913,867	109,056,049	\$22,002,041,539
IWM	iShares Russell 2000 ETF	ETF	776,327,973	\$83,552,075,487	35,287,635	\$3,797,821,613
AAPL	Apple Inc.	Stock	791,793,027	\$82,425,932,278	35,990,592	\$3,746,633,285
QQQ	PowerShares QQQ Trust, Series 1	ETF	602,401,519	\$64,084,766,470	27,381,887	\$2,912,943,930
FB	Facebook, Inc. Class A	Stock	532,857,011	\$58,962,329,609	24,220,773	\$2,680,105,891
EEM	iShares MSCI Emerging Markets ETF	ETF	1,646,002,237	\$54,492,278,576	74,818,284	\$2,476,921,753
AMZN	Amazon.Com Inc	Stock	94,014,971	\$53,495,234,743	4,273,408	\$2,431,601,579
GDJ	Market Vectors Gold Miners ETF	ETF	2,453,191,399	\$48,758,391,504	111,508,700	\$2,216,290,523
MSFT	Microsoft Corp	Stock	713,683,141	\$37,955,108,371	32,440,143	\$1,725,232,199
BAC	Bank of America Corporation	Stock	2,416,489,875	\$32,537,055,803	109,840,449	\$1,478,957,082

Top 10 Most Actively Traded ETPs in the U.S. (by Turnover Volume) in March

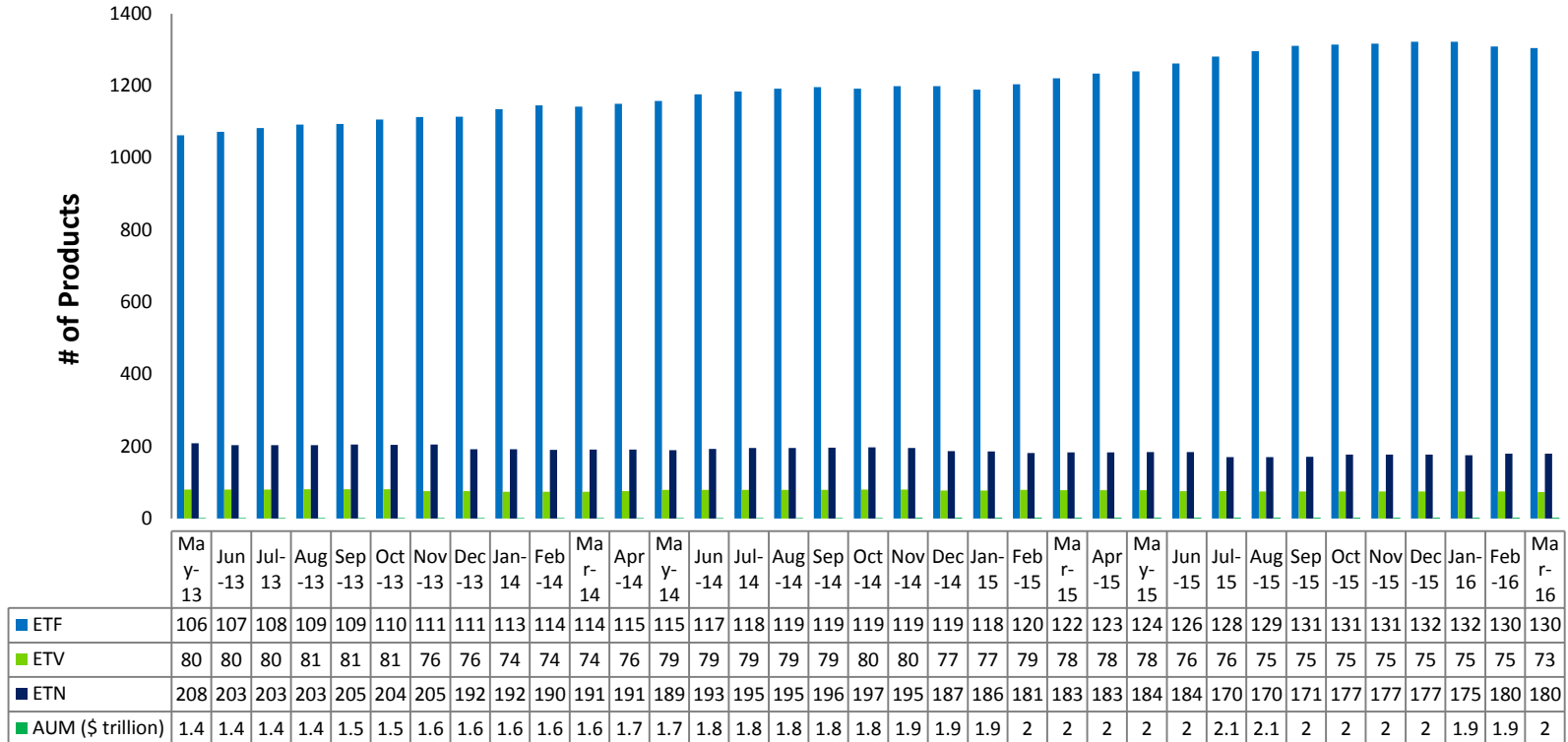
SPY	SPDR S&P 500 ETF Trust	ETF	2,399,233,075	\$484,044,913,867	109,056,049	\$22,002,041,539
IWM	iShares Russell 2000 ETF	ETF	776,327,973	\$83,552,075,487	35,287,635	\$3,797,821,613
QQQ	PowerShares QQQ Trust, Series 1	ETF	602,401,519	\$64,084,766,470	27,381,887	\$2,912,943,930
EEM	iShares MSCI Emerging Markets ETF	ETF	1,646,002,237	\$54,492,278,576	74,818,284	\$2,476,921,753
GDJ	Market Vectors Gold Miners ETF	ETF	2,453,191,399	\$48,758,391,504	111,508,700	\$2,216,290,523
GLD	SPDR Gold Trust, SPDR Gold Shares	ETV	268,794,099	\$32,047,895,032	12,217,914	\$1,456,722,501
XLE	Energy Select Sector SPDR Fund	ETF	512,072,298	\$31,401,825,025	23,276,014	\$1,427,355,683
VXX	iPath S&P 500 VIX Short-Term Futures ETN due 1/30/2019	ETN	1,522,947,765	\$31,221,970,797	69,224,898	\$1,419,180,491
EFA	iShares MSCI EAFE ETF	ETF	499,266,481	\$28,266,175,308	22,693,931	\$1,284,826,150
XLF	Financial Select Sector SPDR Fund	ETF	1,189,885,860	\$26,451,856,771	54,085,721	\$1,202,357,126

NYSE Arca U.S. Exchange Traded Products (ETP)

New ETP Launched on NYSE Arca in March

Symbol	Listing Date	Name	Product Type	Consolidated Trading Volume	Consolidated Turnover Volume (\$)	Average Daily Trading Volume	Average Daily Turnover Volume (\$)
JHMI	3/29/2016	John Hancock Multifactor Industrials ETF	ETF	400	\$9,944	133	\$3,315
JHMA	3/29/2016	John Hancock Multifactor Materials ETF	ETF	400	\$9,924	133	\$3,308
JHMS	3/29/2016	John Hancock Multifactor Consumer Staples ETF	ETF	400	\$10,064	133	\$3,355
JHME	3/29/2016	John Hancock Multifactor Energy ETF	ETF	400	\$9,784	133	\$3,261
JHMU	3/29/2016	John Hancock Multifactor Utilities ETF	ETF	400	\$10,004	133	\$3,335
GAMR	3/9/2016	PureFunds Video Game Tech ETF	ETF	29,956	\$773,403	1,872	\$48,338
IFLY	3/9/2016	PureFunds Drone Economy Strategy ETF	ETF	21,575	\$561,317	1,348	\$35,082
SHE	3/8/2016	SPDR SSGA Gender Diversity Index ETF	ETF	4,350,802	\$259,536,858	255,930	\$15,266,874
GSEU	3/4/2016	Goldman Sachs ActiveBeta® Europe Equity ETF	ETF	286,762	\$7,450,295	15,093	\$392,121
GSJY	3/4/2016	Goldman Sachs ActiveBeta® Japan Equity ETF	ETF	287,660	\$7,551,607	15,140	\$397,453

NYSE Arca U.S. Exchange Traded Products (ETP)



- › As of March 2016, 1866 ETPs are listed in the US, 1558 of which were listed on NYSE Arca
- › NYSE Arca listed ETPs have a total AUM of approx. \$1.98 trillion

NYSE Arca ETPs (By Issuer)

Issuer	# of ETPs	New in March	New YTD	Turnover
Academy Funds	1			\$6,502,611
AdvisorShares	19			\$275,581,592
AlphaClone	2			\$15,578,779
ALPS	12			\$3,281,929,896
ARK	4			\$1,990,641
ArrowShares	2			\$23,002,587
Barclays	70			\$32,313,147,705
Cambria	7		1	\$26,804,946
Charles Schwab	21			\$6,372,064,875
Citigroup	3			\$3,126,293
Columbia Management	2			\$702,712
Credit Suisse	10		1	\$85,656,517
CSOP	3			\$4,499,801
Deutsche Bank	29			\$2,522,623,322
db X-trackers	35			\$4,334,650,974
Diamond Hill	1			\$5,281,253
Direxion Shares	75			\$54,666,128,079
Emerging Global	9			\$79,860,364
ETF Managers Group	9	2(GAMR,IFLY)	2	\$119,846,362
ETF Securities	9			\$302,058,037
Exchange Traded Concepts	8			\$139,913,510
Fidelity	14			\$1,034,772,808
FirstTrust	44			\$12,152,587,401

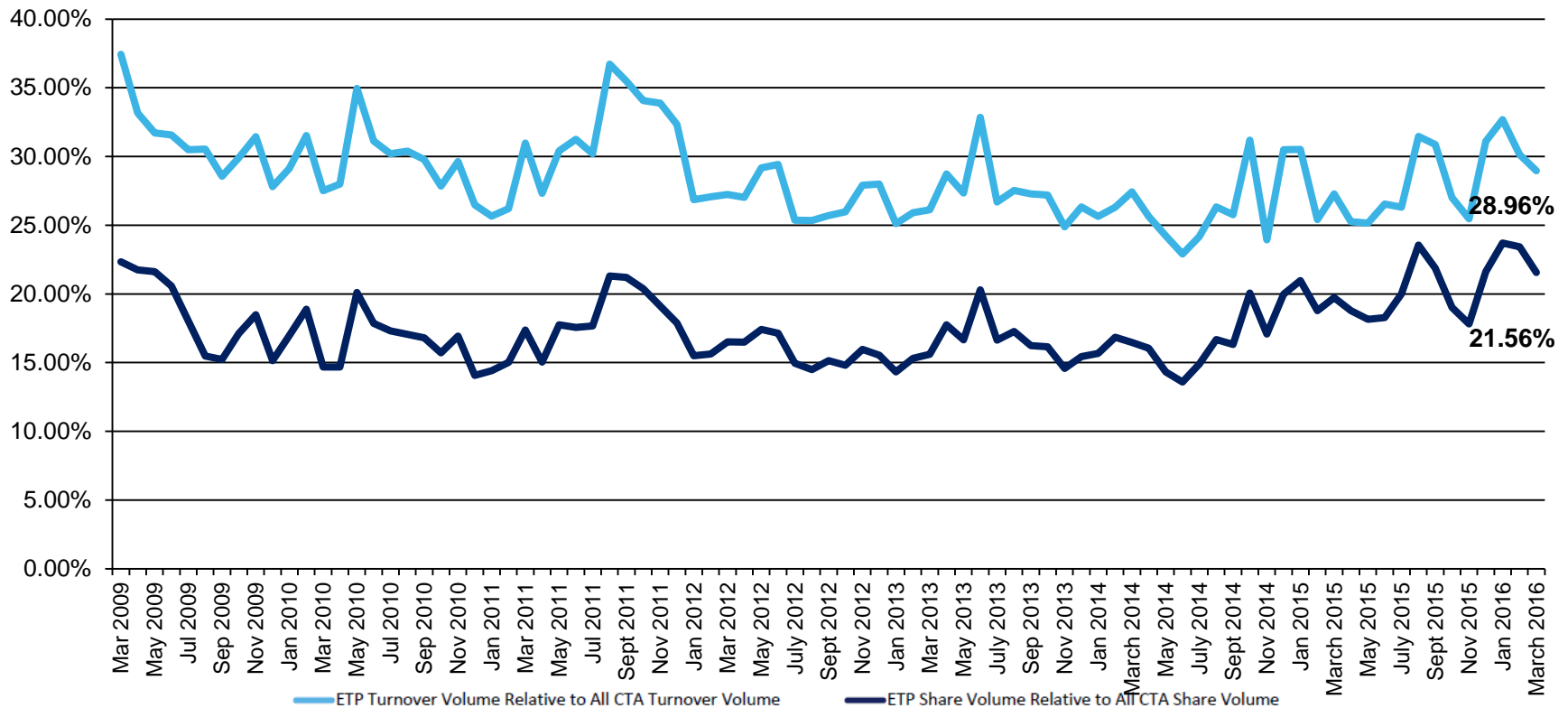
NYSE Arca ETPs (By Issuer)

Issuer	# of ETPs	New in March	New YTD	Turnover
FlexShares	17			\$713,039,627
Franklin Templeton	1			\$14,738,312
Global X	41			\$628,752,108
Goldman Sachs	4	2(GSJY,GSEU)	2	\$4,075,079
Goldman Sachs Asset Management	3			\$195,070,149
Guggenheim	74		1	\$6,900,080,255
Highland Funds	4			\$54,087,209
Horizons	2			\$2,193,855
HSBC	1			\$1,517,002
Huntington	2			\$685,911
IndexIQ	17			\$173,743,316
Invesco PowerShares	114			\$74,723,017,663
iShares	264			\$468,811,204,210
Jefferies	1			\$1,964,059
John Hancock	11	5(JHMI,JHMA,JHMS,JHME,JH MU)	5	\$7,666,065
JPMorgan Chase & Co.	1			\$25,297,480
JP Morgan ETFs	5			\$1,963,479,139
Krane Shares	3			\$123,643,754
Lattice	4			\$11,756,281
LocalShares	1			\$189,576
Market Vectors	54		2	\$71,997,241,202
Merk	1			\$11,735,573
Morgan Stanley	5			\$18,725,395

NYSE Arca ETPs (By Issuer)

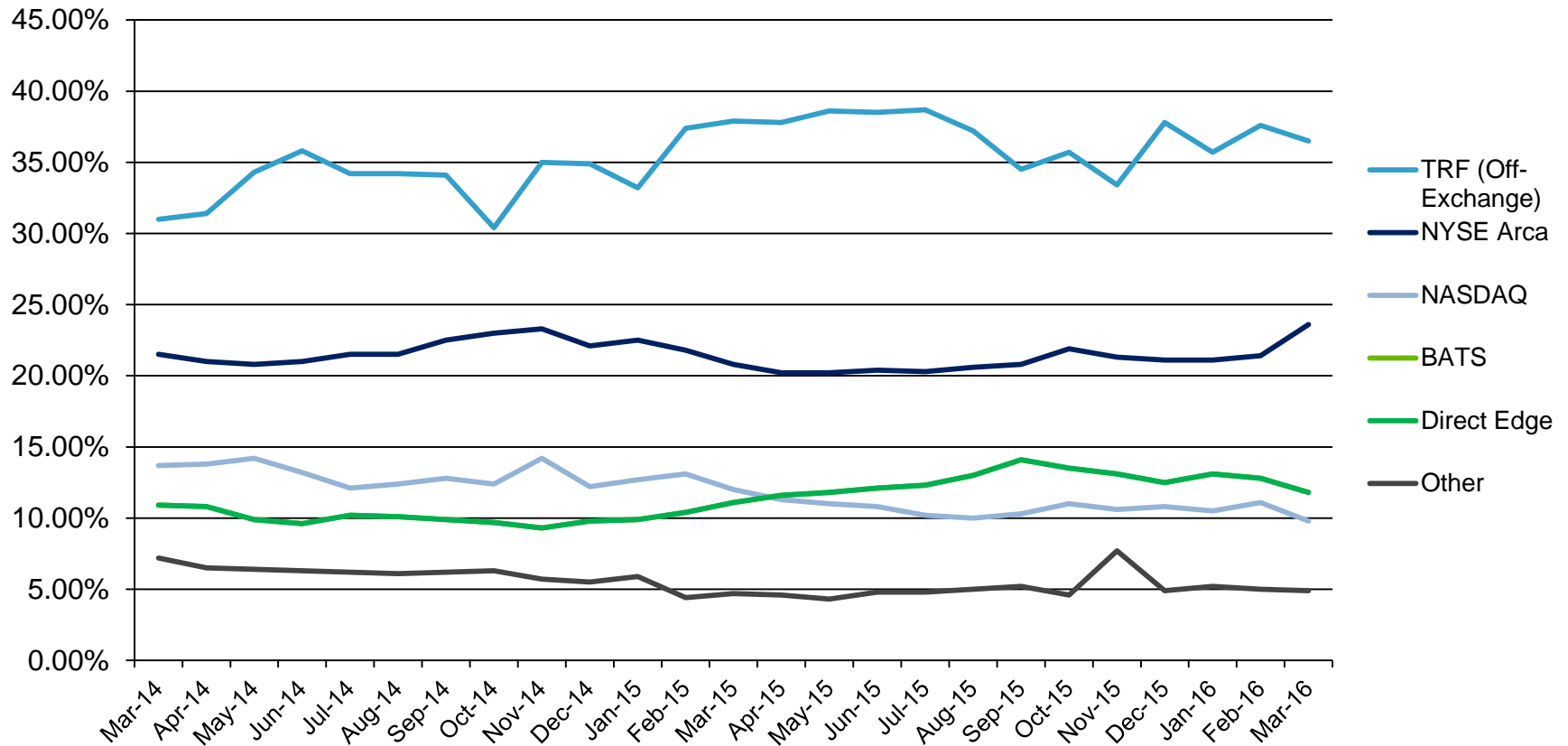
Issuer	# of ETPs	New in March	New YTD	Turnover
O'Shares	5			\$106,321,770
PIMCO	14			\$2,941,933,247
Principal	1			\$4,497,035
ProShares	132			\$80,142,356,654
QuantShares	5			\$48,170,488
RealityShares	1			\$10,454,056
Renaissance Capital	2			\$1,268,498
RevenueShares	8			\$82,168,378
Royal Bank of Canada	1			\$1,600,724
SPDR ETFs	159	1(SHE)	2	\$762,063,569,856
Sprott Asset Management	5			\$335,809,597
Swedish Export Credit (SEK)	7			\$31,294,570
Teucrium	5			\$48,755,337
Tortoise	1			\$1,003,873
TrimTabs	1			\$118,362
UBS	48		5	\$691,923,310
United States Commodity Funds LLC	12			\$11,634,218,374
U.S. Global Investors	1			\$23,582,246
Vanguard	49			\$85,154,884,270
VelocityShares	6			\$32,909,356,162
Virtus ETF Solutions	2			\$28,222,034
WBI	10			\$289,519,523
WisdomTree	64		1	\$13,647,301,951
O'Shares	5			\$106,321,770

U.S. ETP Consolidated Volumes



- › During the month of March, US ETP CADV was 1.66 billion and daily notional value was \$76.30 billion
- › By the end of March, US ETP share and notional volume represented 21.56% and 28.96%, respectively of all CTA issues

U.S. ETP Market Share by Trading Venue



- › In March 2016, NYSE Arca led all exchanges with an ETP trading market share of 23.60%
- › ETP trades occurring off-exchange in March 2016 represented 36.50%

Disclaimer

©2016 NYSE. All rights reserved. NYSE and its affiliates do not recommend or make any representation as to possible benefits from any securities or investments, or third-party products or services. Investors should undertake their own due diligence regarding their securities and investment practices.



About Us

- › For more information, visit www.nyse.com/products/etp-funds-etf
- › Contact us at: etf@nyse.com