



NEW YORK STOCK EXCHANGE

**U.S. EXCHANGE TRADED FUNDS
MONTHLY FLASH**

FEBRUARY 2017

NYSE ARCA U.S. EXCHANGE TRADED FUNDS (ETFs)

HIGHLIGHTS FROM FEBRUARY 2017

- In February, **5 new ETFs¹** listed on NYSE Arca
 - At the end of February, **1,511 ETFs** were listed on NYSE Arca
- US ETP notional volume represented **24.54%** of all CTA issues in February 2017
- US ETP daily average turnover was approximately **\$66.72 billion** in February 2017
- NYSE Arca was at the NBBO **93.2%** of the time, leading all US exchanges
- NYSE Arca had **22.20%** of all US ETP trading volume, leading all US exchanges

¹ETFs include all exchange traded products

NYSE ARCA U.S. EXCHANGE TRADED FUNDS (ETFs)

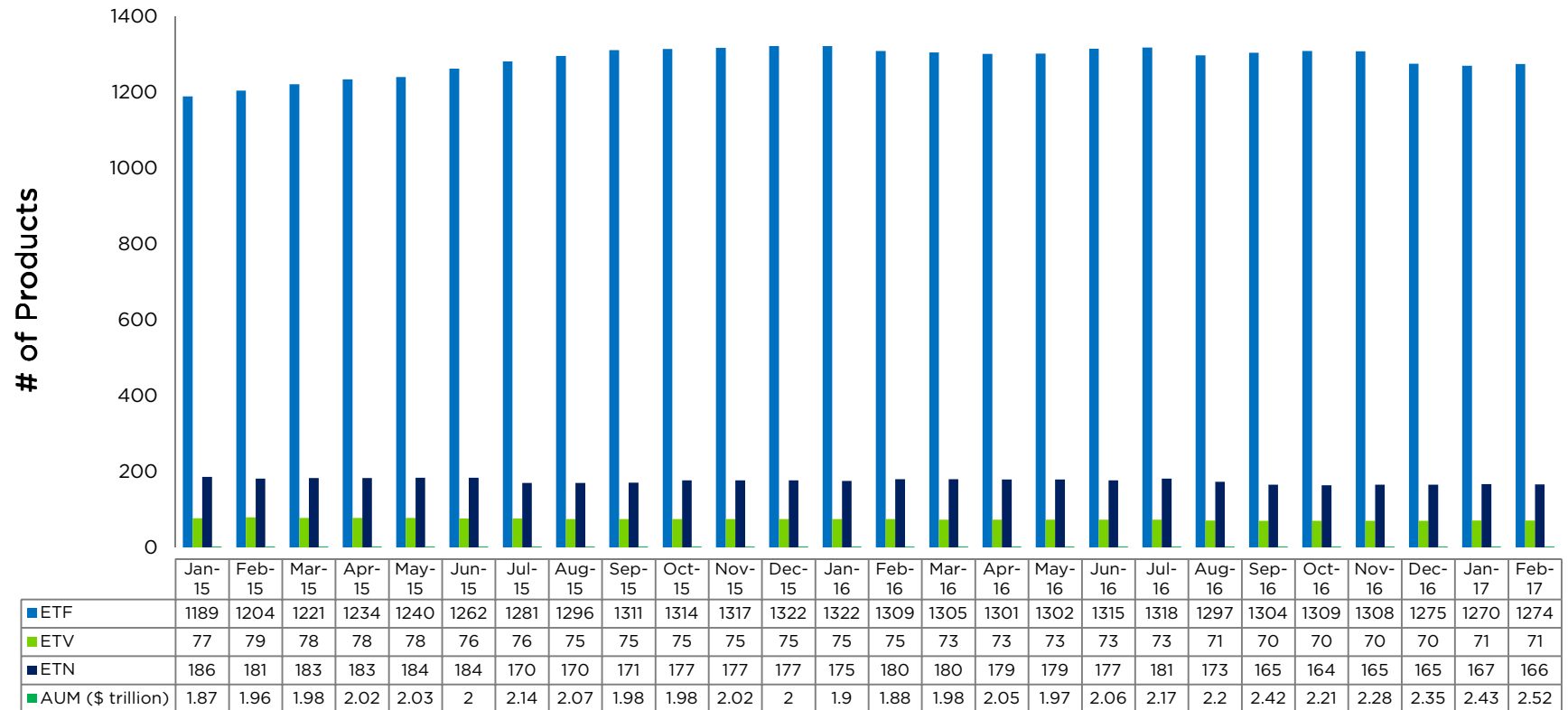
Top 10 Most Actively Traded Securities in the U.S (by Turnover Volume) February						
Symbol	Name	Product Type	Consolidated Trading Volume	Consolidated Turnover Volume (\$)	Average Daily Trading Volume	Average Daily Turnover Volume (\$)
SPY	SPDR S&P 500 ETF Trust	ETF	1,449,838,236	\$337,627,687,201	76,307,276	\$17,769,878,274
AAPL	Apple Inc.	Stock	619,845,886	\$82,236,170,490	32,623,468	\$4,328,219,499
IWM	iShares Russell 2000 ETF	ETF	537,059,693	\$73,876,000,908	28,266,300	\$3,888,210,574
AMZN	Amazon.Com Inc	Stock	75,630,097	\$62,973,389,803	3,980,531	\$3,314,388,937
FB	Facebook, Inc. Class A	Stock	404,803,674	\$54,028,316,587	21,305,457	\$2,843,595,610
BAC	Bank of America Corporation	Stock	1,946,311,764	\$46,258,290,031	102,437,461	\$2,434,646,844
GDXX	VanEck Vectors Gold Miners ETF	ETF	1,697,652,916	\$41,590,468,320	89,350,153	\$2,188,972,017
NVDA	Nvidia Corp	Stock	368,027,616	\$40,384,400,601	19,369,875	\$2,125,494,768
QQQ	PowerShares QQQ Trust, Series 1	ETF	313,441,459	\$40,133,469,463	16,496,919	\$2,112,287,866
EEM	iShares MSCI Emerging Markets ETF	ETF	996,568,998	\$38,066,730,531	52,451,000	\$2,003,512,133
Top 10 Most Actively Traded ETFs in the U.S. (by Turnover Volume) in February						
SPY	SPDR S&P 500 ETF Trust	ETF	1,449,838,236	\$337,627,687,201	76,307,276	\$17,769,878,274
IWM	iShares Russell 2000 ETF	ETF	537,059,693	\$73,876,000,908	28,266,300	\$3,888,210,574
GDXX	VanEck Vectors Gold Miners ETF	ETF	1,697,652,916	\$41,590,468,320	89,350,153	\$2,188,972,017
QQQ	PowerShares QQQ Trust, Series 1	ETF	313,441,459	\$40,133,469,463	16,496,919	\$2,112,287,866
EEM	iShares MSCI Emerging Markets ETF	ETF	996,568,998	\$38,066,730,531	52,451,000	\$2,003,512,133
XLF	Financial Select Sector SPDR Fund	ETV	1,176,002,439	\$28,287,207,444	61,894,865	\$1,488,800,392
GDXXJ	VanEck Vectors Junior Gold Miners ETF	ETF	684,083,826	\$27,420,489,246	36,004,412	\$1,443,183,645
TLT	iShares 20+ Year Treasury Bond ETF	ETF	205,673,536	\$24,764,892,630	10,824,923	\$1,303,415,402
EFA	iShares MSCI EAFE ETF	ETF	351,154,205	\$21,130,183,073	18,481,800	\$1,112,114,899
XLE	Energy Select Sector SPDR Fund	ETF	279,635,864	\$20,197,113,295	14,717,677	\$1,063,005,963

NYSE ARCA U.S. EXCHANGE TRADED FUNDS (ETFs)

New ETPs Launched on NYSE Arca in February

Symbol	Listing Date	Name	Product Type	Consolidated Trading Volume	Consolidated Turnover Volume (\$)	Average Daily Trading Volume	Average Daily Turnover Volume (\$)
BLES	2/28/2017	Inspire Global Hope Large Cap ETF	ETF	6,030	\$151,998	6,030	\$151,998
ISMD	2/28/2017	Inspire Small/Mid Cap Impact ETF	ETF	3,816	\$94,774	3,816	\$94,774
HYLV	2/15/2017	IQ S&P High Yield Low Volatility Bond ETF	ETF	1,146,205	\$28,739,575	127,356	\$3,193,286
XXM	2/10/2017	WisdomTree Global ex-Mexico Equity Fund	ETF	31,799	\$810,509	2,650	\$67,542
PFFR	2/8/2017	InfraCap REIT Preferred ETF	ETF	153,100	\$3,879,337	10,936	\$277,096

NYSE ARCA U.S. EXCHANGE TRADED FUNDS (ETFs)



- As of February, 1,992 ETFs were listed in the U.S., 1,511 of which were listed on NYSE Arca
- NYSE Arca listed ETFs have a total AUM of approximately \$2.5 trillion

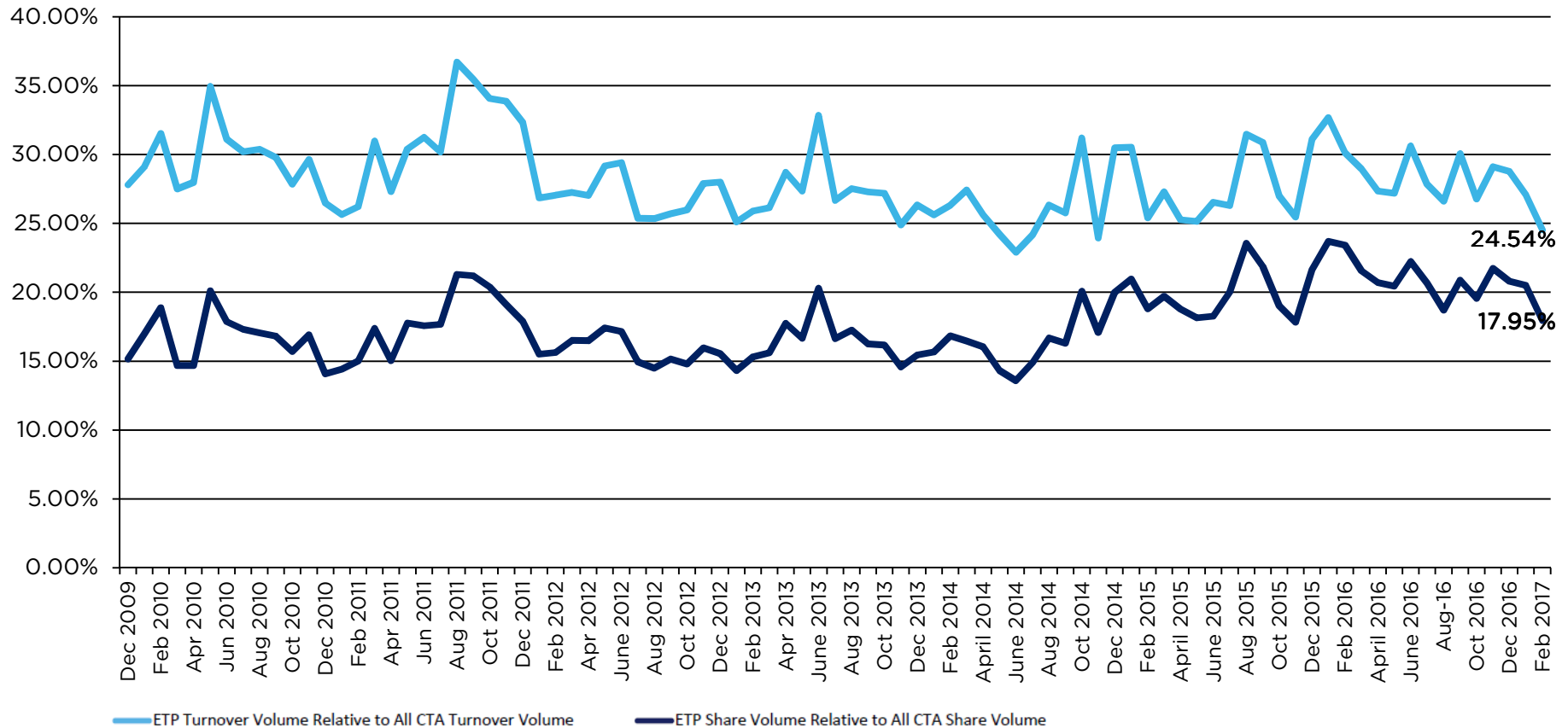
NYSE ARCA ETFs (BY ISSUER)

Issuer	# of ETFs	New in February	New YTD	Turnover
Academy Funds	1			\$5,196,476
AdvisorShares	21			\$160,845,691
AlphaClone	2			\$7,524,351
ALPS	18			\$2,991,548,377
ARK	4			\$19,868,731
ArrowShares	2			\$15,487,425
Barclays	71			\$17,276,586,620
Cambria	3			\$45,449,188
Charles Schwab	21			\$7,614,879,846
Citigroup	3			\$2,368,977
Columbia Management	14			\$154,635,288
Credit Suisse	10			\$64,892,365
CSOP	3			\$1,313,457
Northern Lights	2	2(BLES,ISMD)	2	\$246,772
Deutsche Bank	28			\$2,622,715,898
db X-trackers	18			\$2,474,101,753
Diamond Hill	1			\$3,990,041
Direxion Shares	82		2	\$54,272,328,333
ETF Managers Group	4			\$7,767,704
ETF Securities	5			\$323,165,531
Exchange Traded Concepts	6			\$267,651,051
Fidelity	20			\$1,840,968,603
FirstTrust	34			\$6,455,266,869
FlexShares	18			\$1,054,901,732
Franklin Templeton	8		1	\$83,518,114
Global X	40			\$1,296,904,774
Goldman Sachs	2			\$4,413,415
Goldman Sachs Asset Management	7			\$226,353,096
Guggenheim	76			\$6,592,096,754
Hartford Funds	5			\$22,566,103
Horizons	2			\$3,800,183
IndexIQ	20	1(HYLV)	1	\$276,741,639
Invesco PowerShares	88		1	\$52,355,946,193
iShares	258			\$398,711,830,489

NYSE ARCA ETFs (BY ISSUER)

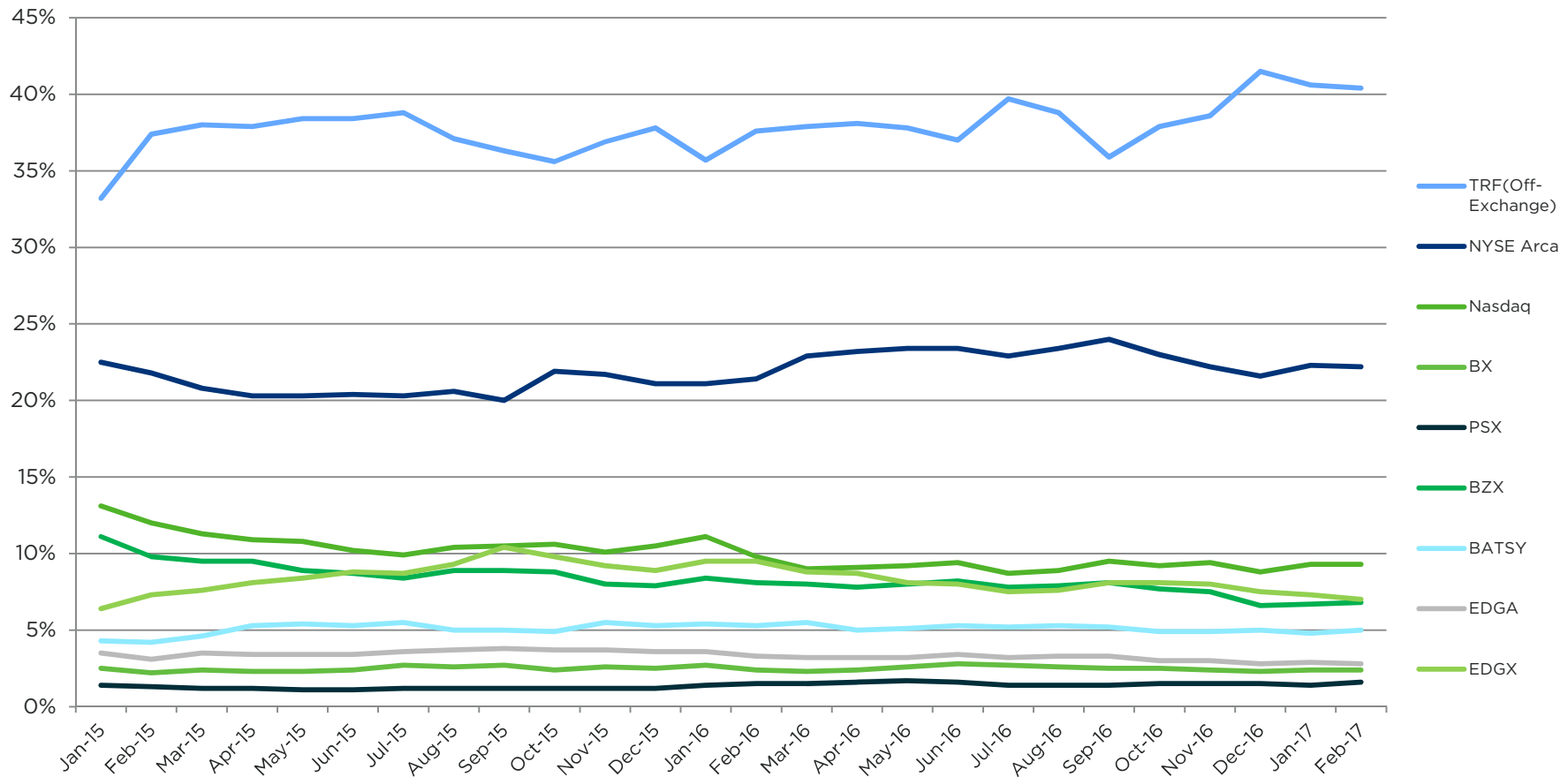
Issuer	# of ETFs	New in February	New YTD	Turnover
Janus	3			\$26,039,801
John Hancock	12			\$56,999,889
JPMorgan Chase & Co.	1			\$1,287,829,123
JP Morgan ETFs	10			\$207,379,052
Krane Shares	3			\$94,757,629
LocalShares	1			\$455,799
Merk	1			\$12,504,350
Morgan Stanley	5			\$3,077,650
Natixis	1			\$1,088,463
Nuveen	1			\$8,967,460
Oppenheimer	9			\$304,727,400
O'Shares	6			\$78,358,926
PIMCO	14			\$3,020,410,729
Principal	1			\$3,808,137
ProShares	120			\$50,486,266,530
PureFunds	6			\$397,633,596
QuantShares	5			\$2,874,818
RealityShares	1			\$14,707,144
Reaves	1			\$1,405,214
Renaissance Capital	2			\$1,568,166
RexShares	2			\$6,586,869
SPDR ETFs	147		1	\$575,738,559,746
Sprott Asset Management	6			\$210,367,341
Strategy Shares	2			\$5,623,372
Swedish Export Credit (SEK)	7			\$34,761,724
Teucrium	5			\$87,132,901
Tortoise	1			\$12,032,410
UBS	41		2	\$659,348,529
United States Commodity Funds LLC	13			\$6,724,915,180
U.S. Global Investors	1			\$28,507,506
VanEck Vectors	53			\$81,701,389,600
Vanguard	49			\$79,880,445,998
VelocityShares	7			\$29,198,342,770
Virtus ETF Solutions	5	1(PFFR)	2	\$149,526,718
WBI	12			\$68,974,169
WisdomTree	60	1(XMX)	1	\$9,659,584,380

U.S. ETF CONSOLIDATED VOLUMES



- During the month of February, U.S. ETF CADV was 1.23 billion and daily notional value was \$66.72 billion
- By the end of February, U.S. ETF share and notional volume represented 17.95% and 24.54%, respectively of all CTA issues

U.S. ETF MARKET SHARE BY TRADING VENUE



- In February 2017, NYSE Arca led all exchanges with an ETF trading market share of 22.20%
- ETF trades occurring off-exchange in February represented 40.40%

CONTACT US

- For more information, visit www.nyse.com/etf
- Email us at: etf@nyse.com

©2017 NYSE. All rights reserved. NYSE and its affiliates do not recommend or make any representation as to possible benefits from any securities or investments, or third-party products or services. Investors should undertake their own due diligence regarding their securities and investment practices.