

April 2016

U.S. ETP Monthly Flash

NYSE Arca U.S. Exchange Traded Products (ETP)

Highlights from April 2016

- › In April, 12 new ETPs listed on NYSE Arca
 - At the end of March, 1,553 ETPs were listed on NYSE Arca
- › US ETP notional volume represented 27.34% of all CTA issues in April 2016
- › US ETP daily average turnover was approximately \$79.94 billion in April 2016
- › NYSE Arca was at the NBBO 91.08% of the time, leading all US exchanges
- › NYSE Arca had 23.20% of all US ETP trading volume, leading all US exchanges

NYSE Arca U.S. Exchange Traded Products (ETP)

Top 10 Most Actively Traded Securities in the U.S (by Turnover Volume) April

Symbol	Name	Product Type	Consolidated Trading Volume	Consolidated Turnover Volume (\$)	Average Daily Trading Volume	Average Daily Turnover Volume (\$)
SPY	SPDR S&P 500 ETF Trust	ETF	1,980,593,310	\$410,069,914,159	94,313,967	\$19,527,138,769
AAPL	Apple Inc.	Stock	908,336,156	\$95,101,406,688	43,254,103	\$4,528,638,414
FB	Facebook, Inc. Class A	Stock	750,219,518	\$84,089,911,326	35,724,739	\$4,004,281,492
IWM	iShares Russell 2000 ETF	ETF	573,221,547	\$64,058,167,159	27,296,264	\$3,050,388,912
QQQ	PowerShares QQQ Trust, Series 1	ETF	560,303,584	\$61,074,443,444	26,681,123	\$2,908,306,831
AMZN	Amazon.Com Inc	Stock	78,464,320	\$48,558,862,864	3,736,396	\$2,312,326,803
EEM	iShares MSCI Emerging Markets ETF	ETF	1,335,237,339	\$45,773,467,361	63,582,730	\$2,179,688,922
GDx	VanEck Vectors Gold Miners ETF	ETF	1,895,636,238	\$42,462,704,366	90,268,392	\$2,022,033,541
AGN	Allergan plc	Stock	172,443,684	\$40,211,606,864	8,211,604	\$1,914,838,422
MSFT	Microsoft Corp	Stock	747,601,584	\$39,906,604,089	35,600,075	\$1,900,314,480

Top 10 Most Actively Traded ETPs in the U.S. (by Turnover Volume) in April

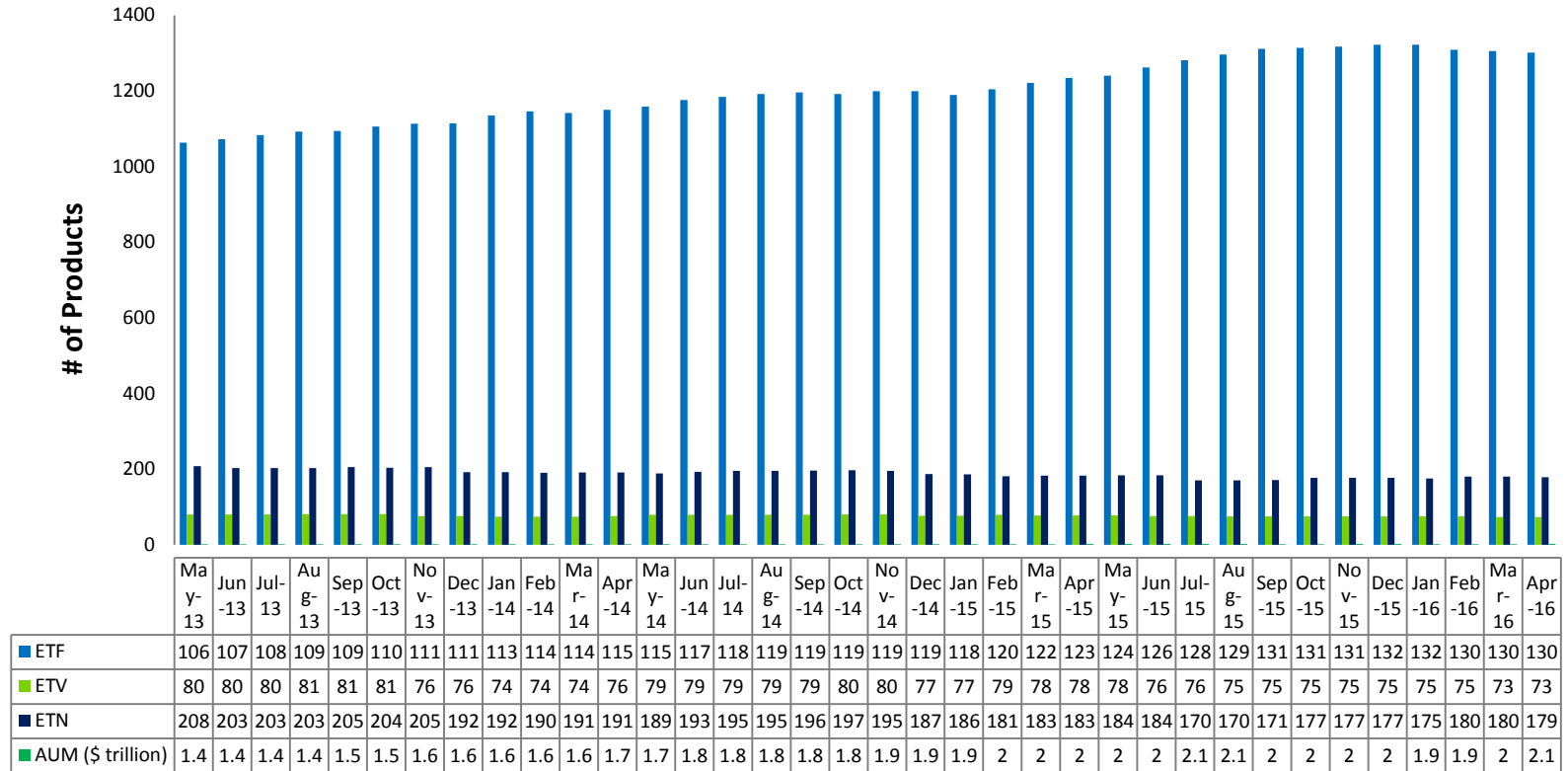
SPY	SPDR S&P 500 ETF Trust	ETF	1,980,593,310	\$410,069,914,159	94,313,967	\$19,527,138,769
IWM	iShares Russell 2000 ETF	ETF	573,221,547	\$64,058,167,159	27,296,264	\$3,050,388,912
QQQ	PowerShares QQQ Trust, Series 1	ETF	560,303,584	\$61,074,443,444	26,681,123	\$2,908,306,831
EEM	iShares MSCI Emerging Markets ETF	ETF	1,335,237,339	\$45,773,467,361	63,582,730	\$2,179,688,922
GDx	VanEck Vectors Gold Miners ETF	ETF	1,895,636,238	\$42,462,704,366	90,268,392	\$2,022,033,541
GLD	SPDR Gold Trust, SPDR Gold Shares	ETV	230,921,458	\$27,491,826,963	10,996,260	\$1,309,134,617
EFA	iShares MSCI EAFE ETF	ETF	448,445,070	\$25,987,999,292	21,354,527	\$1,237,523,776
XLE	Energy Select Sector SPDR Fund	ETF	395,303,949	\$25,488,384,413	18,823,998	\$1,213,732,591
VXX	iPath S&P 500 VIX Short-Term Futures ETN due 1/30/2019	ETN	1,448,762,720	\$24,785,106,235	68,988,701	\$1,180,243,154
XLF	Financial Select Sector SPDR Fund	ETF	988,083,975	\$22,681,635,000	47,051,618	\$1,080,077,857

NYSE Arca U.S. Exchange Traded Products (ETP)

New ETP Launched on NYSE Arca in April

Symbol	Listing Date	Name	Product Type	Consolidated Trading Volume	Consolidated Turnover Volume (\$)	Average Daily Trading Volume	Average Daily Turnover Volume (\$)
WIZE	4/26/2016	CrowdInvest Wisdom ETF	ETF	41,215	\$1,027,314	10,304	\$256,829
BUZ	4/19/2016	Sprott Buzz Social Media Insights ETF	ETF	70,057	\$1,762,811	7,784	\$195,868
OPD	4/19/2016	Guggenheim Large Cap Optimized Diversification ETF	ETF	5,098	\$127,989	566	\$14,221
DEMG	4/19/2016	Deutsche X-trackers FTSE Emerging Comprehensive Factor ETF	ETF	4,400	\$111,654	489	\$12,406
ERYY	4/7/2016	Direxion Daily Energy Bear 1X Shares	ETF	56,510	\$1,380,032	3,324	\$81,178
FAZZ	4/7/2016	Direxion Daily Financial Bear 1X Shares	ETF	39,814	\$1,002,544	2,342	\$58,973
TECZ	4/7/2016	Direxion Daily Technology Bear 1X Shares	ETF	45,329	\$1,150,193	2,666	\$67,658
GHE	4/5/2016	REX Gold Hedged FTSE Emerging Markets ETF	ETF	65,387	\$1,691,517	3,441	\$89,027
GHS	4/5/2016	REX Gold Hedged S&P 500 ETF	ETF	96,748	\$2,487,699	5,092	\$130,932
JUNE	4/4/2016	Dhandho Junoon ETF	ETF	248,842	\$6,208,262	12,442	\$310,413
JPIH	4/4/2016	JPMorgan Diversified Return International Currency Hedged ETF	ETF	1,923,500	\$49,625,100	96,175	\$2,481,255
JPEH	4/4/2016	JPMorgan Diversified Return Europe Currency Hedged ETF	ETF	1,957,576	\$50,190,690	97,879	\$2,509,535

NYSE Arca U.S. Exchange Traded Products (ETP)



- › As of April 2016, 1,887 ETPs are listed in the US, 1,553 of which were listed on NYSE Arca
- › NYSE Arca listed ETPs have a total AUM of approx. \$2.05 trillion

NYSE Arca ETPs (By Issuer)

Issuer	# of ETPs	New in April	New YTD	Turnover
Academy Funds	1			\$5,330,530
AdvisorShares	19			\$268,109,102
AlphaClone	2			\$25,925,919
ALPS	13	1(JUNE)	1	\$3,053,613,265
ARK	4			\$3,265,786
ArrowShares	2			\$15,764,683
Barclays	70			\$25,790,966,552
Cambria	7		1	\$29,441,814
Charles Schwab	21			\$5,603,733,039
Citigroup	3			\$1,544,758
Columbia Management	2			\$826,948
Credit Suisse	10		1	\$161,403,100
CSOP	3			\$5,754,189
Deutsche Bank	28			\$2,152,507,786
db X-trackers	36	1(DEMG)	1	\$4,302,320,630
Diamond Hill	1			\$5,987,379
Direxion Shares	78	3(ERY,Y,FAZZ,TECZ)	3	\$51,640,555,055
Emerging Global	9			\$98,272,705
ETF Managers Group	3			\$7,542,414
ETF Securities	9			\$291,388,142
Exchange Traded Concepts	9	1(WIZE)	1	\$77,334,264
Fidelity	14			\$1,085,015,113
FirstTrust	32			\$7,035,075,672

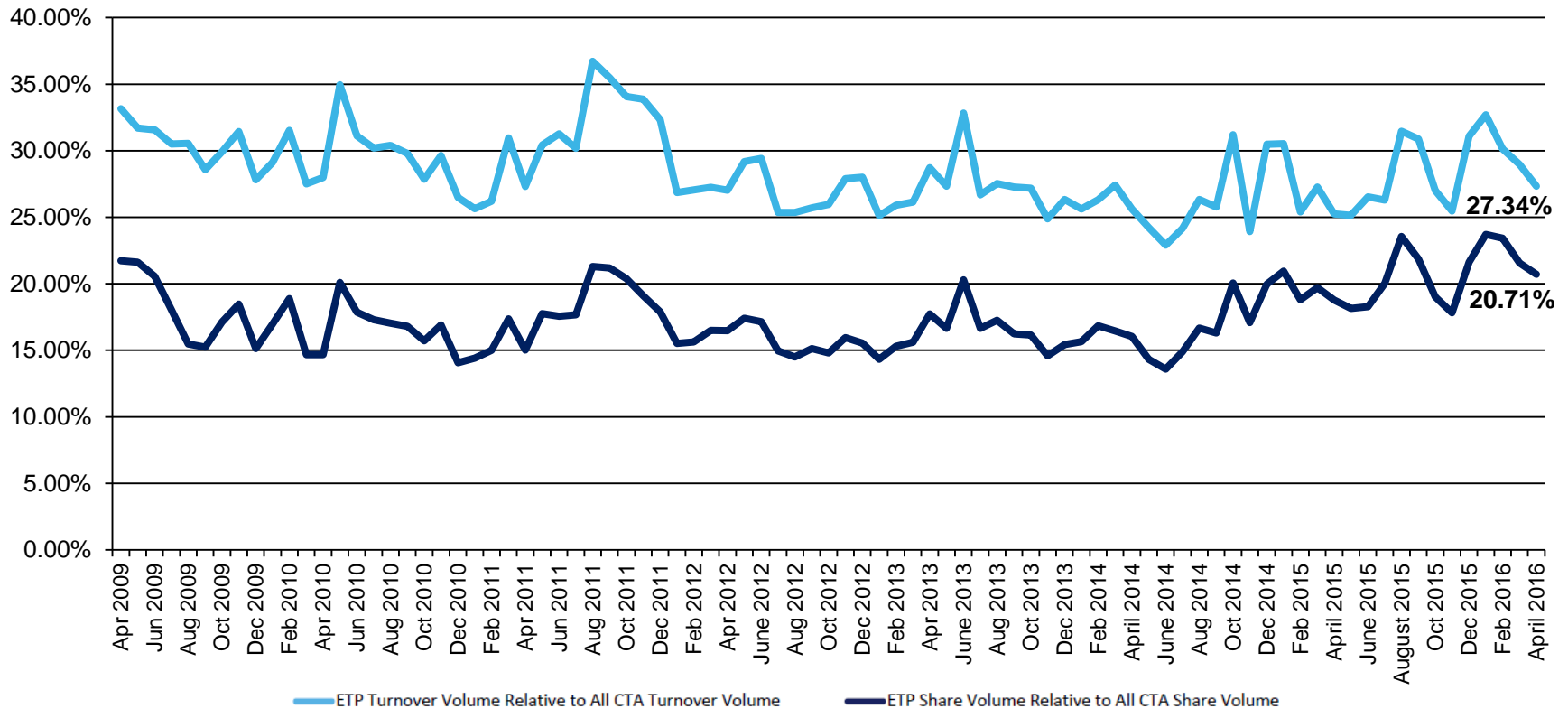
NYSE Arca ETPs (By Issuer)

Issuer	# of ETPs	New in April	New YTD	Turnover
FlexShares	17			\$914,252,077
Franklin Templeton	1			\$4,749,588
Global X	40			\$738,961,047
Goldman Sachs	2			\$1,466,409
Goldman Sachs Asset Management	5		2	\$189,890,119
Guggenheim	75	1(OPD)	2	\$5,923,452,999
Highland Funds	1			\$30,003,967
Horizons	2			\$7,051,777
HSBC	1			\$543,027
Huntington	2			\$703,614
IndexIQ	17			\$261,399,755
Invesco PowerShares	114			\$72,545,756,789
iShares	264			\$409,053,933,323
Jefferies	1			\$1,357,485
John Hancock	11		5	\$13,812,808
JPMorgan Chase & Co.	1			\$170,771,983
JP Morgan ETFs	7	2(JPIH, JPEH)	2	\$1,348,022,638
Krane Shares	3			\$50,937,987
Lattice	4			\$1,052,304
LocalShares	1			\$365,710
Merk	1			\$20,697,693
Morgan Stanley	5			\$14,228,110
Oppenheim	8			\$92,958,757
O'Shares	5			\$107,487,965

NYSE Arca ETPs (By Issuer)

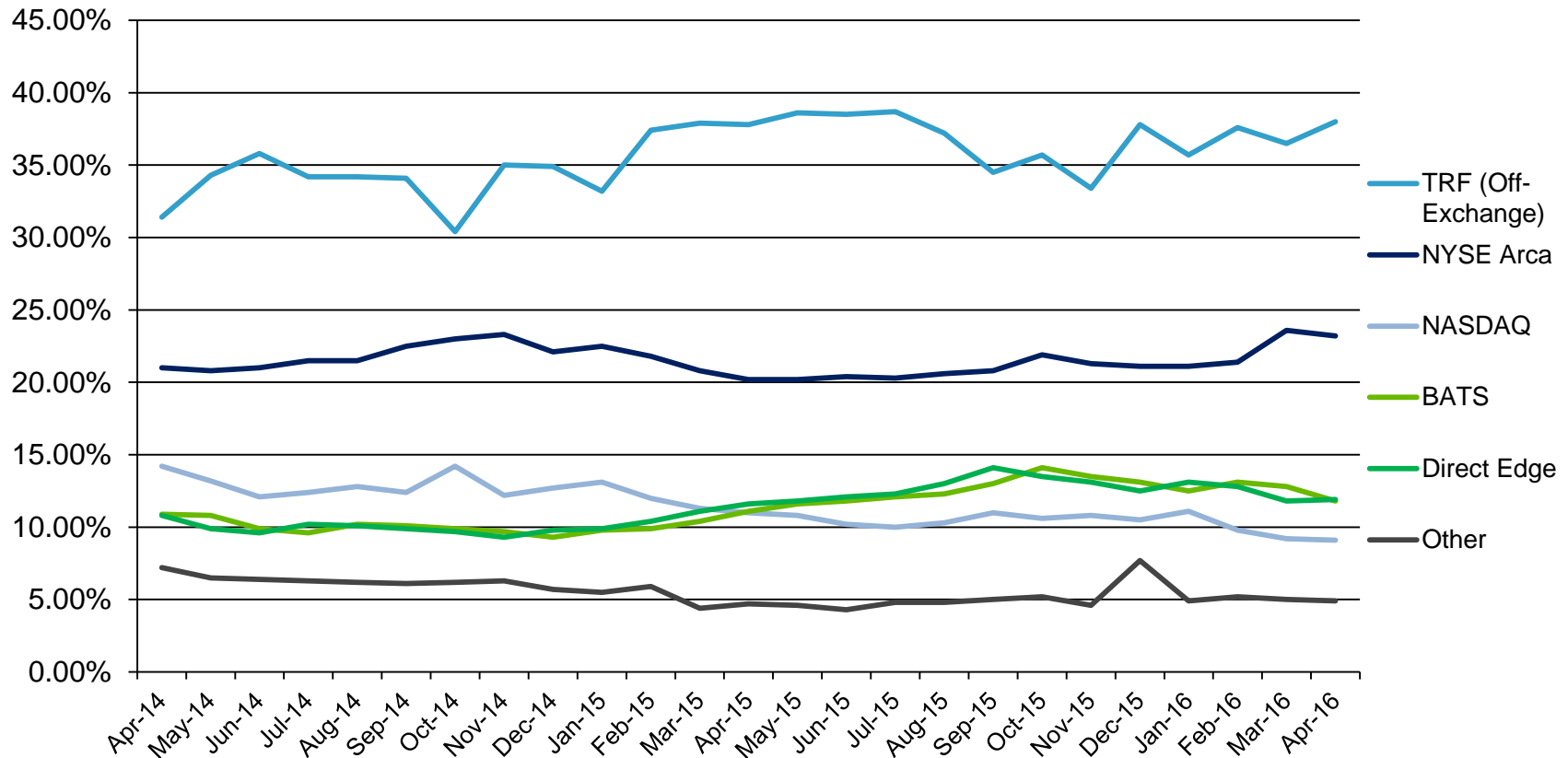
Issuer	# of ETPs	New in April	New YTD	Turnover
PIMCO	14			\$2,119,269,583
Principal	1			\$2,090,495
ProShares	132			\$70,523,921,559
PureFunds	6		2	\$148,783,897
QuantShares	5			\$44,218,840
RealityShares	1			\$17,195,830
Renaissance Capital	2			\$1,442,509
RexShares	2	2(GHE,GHS)	2	\$4,179,216
Royal Bank of Canada	1			\$992,700
SPDR ETFs	159		2	\$662,924,976,872
Sprott Asset Management	6	1(BUZ)	1	\$460,056,778
Swedish Export Credit (SEK)	7			\$61,097,113
Teucrium	5			\$40,547,449
Tortoise	1			\$1,676,422
TrimTabs	1			\$311,060
UBS	48		5	\$16,334,001
United States Commodity Funds LLC	12			\$614,930,680
U.S. Global Investors	1			\$9,595,521,710
VanEck Vectors	54		2	\$66,584,373,440
Vanguard	49			\$72,679,981,311
VelocityShares	6			\$38,415,948,819
Virtus ETF Solutions	2			\$31,583,052
WBI	10			\$144,835,553
WisdomTree	64		1	\$12,942,862,217

U.S. ETP Consolidated Volumes



- › During the month of April, US ETP CADV was 1.74 billion and daily notional value was \$79.94 billion
- › By the end of April, US ETP share and notional volume represented 20.71% and 27.34%, respectively of all CTA issues

U.S. ETP Market Share by Trading Venue



- › In April 2016, NYSE Arca led all exchanges with an ETP trading market share of 23.20%
- › ETP trades occurring off-exchange in April 2016 represented 38%

Disclaimer

©2016 NYSE. All rights reserved. NYSE and its affiliates do not recommend or make any representation as to possible benefits from any securities or investments, or third-party products or services. Investors should undertake their own due diligence regarding their securities and investment practices.



About Us

- › For more information, visit www.nyse.com/products/etp-funds-etf
- › Contact us at: etf@nyse.com