



**NEW YORK STOCK EXCHANGE**

**U.S. EXCHANGE TRADED FUNDS  
MONTHLY FLASH**

NOVEMBER 2017

# NYSE ARCA U.S. EXCHANGE TRADED FUNDS (ETFs)

## HIGHLIGHTS FROM NOVEMBER 2017

- In November, **29 new ETFs<sup>1</sup>** listed on NYSE Arca
  - At the end of November, **1,487 ETFs** were listed on NYSE Arca
- US ETP notional volume represented **24.17%** of all CTA issues in November 2017
- US ETP daily average turnover was approximately **\$69.35** billion in November 2017
- NYSE Arca was at the NBBO **91.28%** of the time, leading all US exchanges
- NYSE Arca had **22.20%** of all US ETP trading volume, leading all US exchanges

<sup>1</sup>ETFs include all exchange traded products

# NYSE ARCA U.S. EXCHANGE TRADED FUNDS (ETFs)

## Top 10 Most Actively Traded Securities in the U.S (by Turnover Volume) November

Symbol	Name	Product Type	Consolidated Trading Volume	Consolidated Turnover Volume (\$)	Average Daily Trading Volume	Average Daily Turnover Volume (\$)
SPY	SPDR S&P 500 ETF Trust	ETF	1,371,804,634	\$355,872,003,556	65,324,030	\$16,946,285,884
AAPL	Apple Inc.	Stock	600,663,371	\$103,295,741,291	28,603,018	\$4,918,844,823
QQQ	PowerShares QQQ Trust, Series 1	ETF	584,198,367	\$89,948,246,973	27,818,970	\$4,283,249,856
AMZN	Amazon.Com Inc	Stock	77,165,104	\$88,327,485,677	3,674,529	\$4,206,070,747
IWM	iShares Russell 2000 ETF	ETF	524,221,547	\$78,143,304,914	24,962,931	\$3,721,109,758
BABA	Alibaba Group Holding Limited	Stock	420,282,837	\$77,895,242,940	20,013,468	\$3,709,297,283
FB	Facebook, Inc. Class A	Stock	350,998,773	\$62,934,645,251	16,714,227	\$2,996,887,869
NVDA	Nvidia Corp	Stock	295,772,501	\$61,822,959,898	14,084,405	\$2,943,950,471
EEM	iShares MSCI Emerging Markets ETF	ETF	1,051,382,999	\$49,104,726,057	50,065,857	\$2,338,320,288
TSLA	Tesla, Inc. Common Stock	Stock	148,812,747	\$45,962,460,833	7,086,321	\$2,188,688,611

## Top 10 Most Actively Traded ETFs in the U.S. (by Turnover Volume) in November

SPY	SPDR S&P 500 ETF Trust	ETF	1,371,804,634	\$355,872,003,556	65,324,030	\$16,946,285,884
QQQ	PowerShares QQQ Trust, Series 1	ETF	584,198,367	\$89,948,246,973	27,818,970	\$4,283,249,856
IWM	iShares Russell 2000 ETF	ETF	524,221,547	\$78,143,304,914	24,962,931	\$3,721,109,758
EEM	iShares MSCI Emerging Markets ETF	ETF	1,051,382,999	\$49,104,726,057	50,065,857	\$2,338,320,288
XLF	Financial Select Sector SPDR Fund	ETF	1,221,563,134	\$32,484,207,890	58,169,673	\$1,546,867,042
HYG	iShares iBoxx \$ High Yield Corporate Bond ETF	ETF	312,351,792	\$27,291,658,476	14,873,895	\$1,299,602,785
EFA	iShares MSCI EAFE ETF	ETF	371,555,812	\$25,849,741,819	17,693,134	\$1,230,940,087
VXX	iPath S&P 500 VIX Short-Term Futures ETN due 1/30/2019	ETN	734,842,504	\$24,788,087,169	34,992,500	\$1,180,385,103
TLT	iShares 20+ Year Treasury Bond ETF	ETF	149,485,759	\$18,790,959,097	7,118,369	\$894,807,576
XLE	Energy Select Sector SPDR Fund	ETF	262,658,369	\$17,999,359,692	12,507,541	\$857,112,366

# NYSE ARCA U.S. EXCHANGE TRADED FUNDS (ETFs)

## New ETPs Launched on NYSE Arca in November

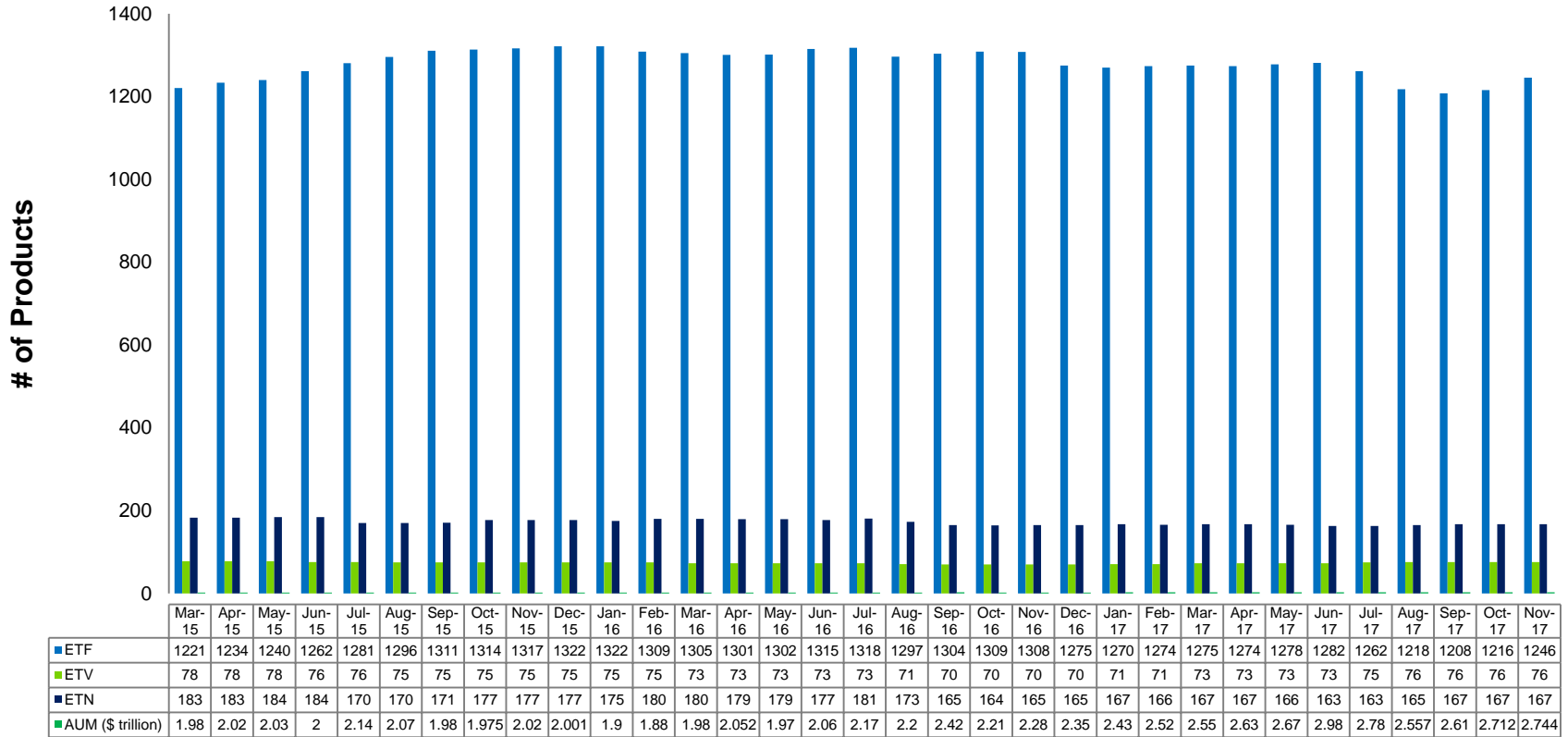
Symbol	Listing Date	Name	Product Type	Consolidated Trading Volume	Consolidated Turnover Volume (\$)	Average Daily Trading Volume	Average Daily Turnover Volume (\$)
SPDV	11/29/2017	AAM S&P 500 High Dividend Value ETF	ETF	3,718	\$94,346	1,859	\$47,173
EEMD	11/29/2017	AAM S&P Emerging Markets High Dividend Value ETF	ETF	2,487	\$62,059	1,244	\$31,030
CLIX	11/16/2017	ProShares Long Online/Short Stores ETF	ETF	130,012	\$5,185,264	13,001	\$518,526
EMTY	11/16/2017	ProShares Decline of the Retail Store ETF	ETF	175,193	\$6,535,416	17,519	\$653,542
PILL	11/15/2017	Direxion Daily Pharmaceutical & Medical Bull 3X Shares	ETF	99,862	\$2,534,980	9,078	\$230,453
JHSC	11/9/2017	John Hancock Multifactor Small Cap ETF	ETF	1,041,705	\$25,929,712	69,447	\$1,728,647
EMEM	11/9/2017	Virtus Glovista Emerging Markets ETF	ETF	453,661	\$11,246,223	30,244	\$749,748
JDIV	11/9/2017	JPMorgan U.S. Dividend ETF	ETF	998,810	\$25,082,081	62,426	\$1,567,630
JMIN	11/9/2017	JPMorgan U.S. Minimum Volatility ETF	ETF	995,958	\$24,978,618	62,247	\$1,561,164
JMOM	11/9/2017	JPMorgan U.S. Momentum Factor ETF	ETF	1,000,566	\$24,964,725	62,535	\$1,560,295
JQUA	11/9/2017	JPMorgan U.S. Quality Factor ETF	ETF	998,101	\$24,882,657	62,381	\$1,555,166
JVAL	11/9/2017	JPMorgan U.S. Value Factor ETF	ETF	1,000,677	\$24,917,734	62,542	\$1,557,358
ENTR	11/8/2017	ERShares Entrepreneur 30 ETF	ETF	3,039,364	\$45,501,585	178,786	\$2,676,564
FLAU	11/6/2017	Franklin FTSE Australia ETF	ETF	17,763	\$446,197	935	\$23,484

# NYSE ARCA U.S. EXCHANGE TRADED FUNDS (ETFs)

## New ETPs Launched on NYSE Arca in November (con't)

Symbol	Listing Date	Name	Product Type	Consolidated Trading Volume	Consolidated Turnover Volume (\$)	Average Daily Trading Volume	Average Daily Turnover Volume (\$)
FLBR	11/6/2017	Franklin FTSE Brazil ETF	ETF	126,128	\$3,009,557	6,638	\$158,398
FLCA	11/6/2017	Franklin FTSE Canada ETF	ETF	222,461	\$5,562,965	11,708	\$292,788
FLCH	11/6/2017	Franklin FTSE China ETF	ETF	260,776	\$6,630,428	13,725	\$348,970
FLFR	11/6/2017	Franklin FTSE France ETF	ETF	5,541	\$138,056	292	\$7,266
FLGR	11/6/2017	Franklin FTSE Germany ETF	ETF	11,667	\$294,094	614	\$15,479
FLHK	11/6/2017	Franklin FTSE Hong Kong ETF	ETF	40,334	\$1,048,037	2,123	\$55,160
FLIY	11/6/2017	Franklin FTSE Italy ETF	ETF	5,001	\$126,053	263	\$6,634
FLJP	11/6/2017	Franklin FTSE Japan ETF	ETF	332,282	\$8,582,244	17,489	\$451,697
FLJH	11/6/2017	Franklin FTSE Japan Hedged ETF	ETF	323,650	\$8,324,213	17,034	\$438,116
FLMX	11/6/2017	Franklin FTSE Mexico ETF	ETF	69,399	\$1,715,882	3,653	\$90,310
FLKR	11/6/2017	Franklin FTSE South Korea ETF	ETF	68,210	\$1,745,650	3,590	\$91,876
FLTW	11/6/2017	Franklin FTSE Taiwan ETF	ETF	108,347	\$2,744,639	5,702	\$144,455
FLGB	11/6/2017	Franklin FTSE United Kingdom ETF	ETF	3,214	79,322	169	\$4,175
FLEE	11/6/2017	Franklin FTSE Europe ETF	ETF	6,256	155,748	329	\$8,197
FLEH	11/6/2017	Franklin FTSE Europe Hedged ETF	ETF	16,783	412,916	883	\$21,732

# NYSE ARCA U.S. EXCHANGE TRADED FUNDS (ETFs)



- As of November 2017, 2,093 ETFs were listed in the U.S., 1,487 of which were listed on NYSE Arca
- NYSE Arca listed ETFs have a total AUM of approximately \$2.74 trillion

# NYSE ARCA ETFs (BY ISSUER)

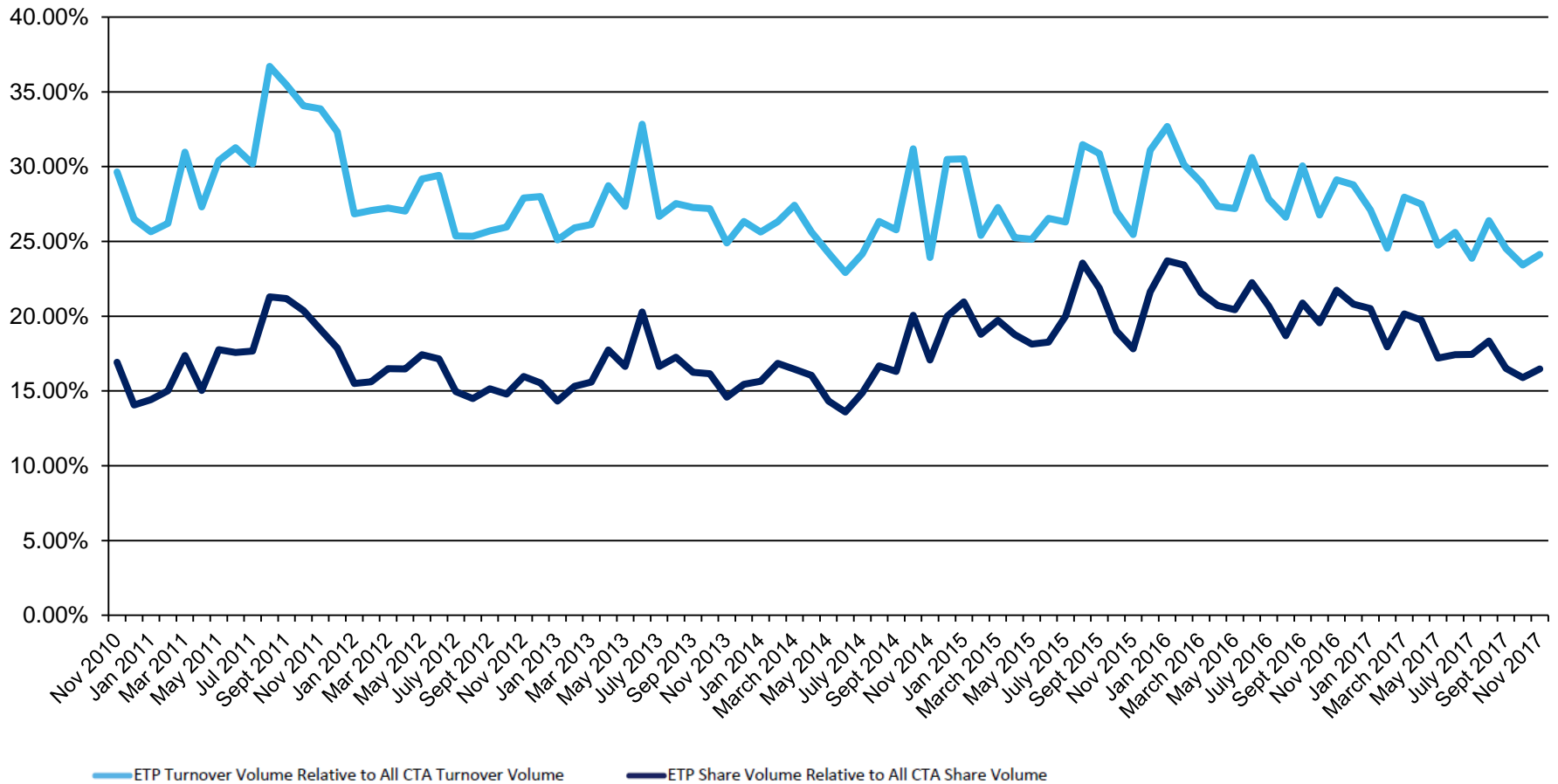
Issuer	# of ETFs	New in November	New YTD	Turnover
AAM	2	2(SPDV, EEMD)	2	\$156,405
Academy Funds	1			\$231,714,038
AdvisorShares	16		1	\$238,633,069
AlphaClone	2			\$1,697,496
ALPS	17			\$4,015,480,175
ARK	4			\$345,533,755
ArrowShares	2			\$8,790,448
Barclays	71		1	\$25,691,398,671
Cambria	3		1	\$53,537,013
Change Finance	1		1	\$438,988
Charles Schwab	22		1	\$6,841,784,523
Citigroup	3			\$480,378
ClearShares	1		1	\$1,658,252
Columbia Management	11		1	\$133,993,472
Credit Suisse	9		2	\$88,445,049
CSOP	3			\$3,781,743
Deutsche Bank	28			\$2,190,615,498
db X-trackers	16			\$2,052,271,693
DeltaShares	4		4	\$71,974
Diamond Hill	1			\$2,842,615
Direxion Shares	76	1(PILL)	9	\$32,147,222,275
EntrepreneurShares	1	1(ENTR)	1	\$45,501,585
ETF Managers Group	11		1	\$352,257,626
ETF Securities	8		3	\$280,277,983
Exchange Traded Concepts	7		1	\$881,058,433
Exponential ETFs	1		1	\$238,742
Fidelity	20			\$1,217,862,879
Fieldstone	2		2	\$12,259,679
FirstTrust	37		4	\$9,117,564,654
FlexShares	18			\$621,116,624
Franklin Templeton	26	16(FLAU, FLBR, FLCA, FLCH, FLFR, FLGR, FLHK, FLIY, FLJP, FLJH, FLMX, FLKR, FLTW, FLGB, FLEE, FLEH)	19	\$68,320,302
Global X	34			\$2,758,046,512
Goldman Sachs	2			\$5,761,117
Goldman Sachs Asset Management	10		3	\$362,689,438
GraniteShares	3		2	\$9,185,093
Guggenheim	79		3	\$4,843,845,047
Hartford Funds	8		3	\$24,502,101
Horizons	1		1	\$6,665,858
IndexIQ	22		3	\$335,889,233
Inspire Investing	4		4	\$21,575,567

# NYSE ARCA ETFs (BY ISSUER)

Issuer	# of ETFs	New in November	New YTD	Turnover
Invesco PowerShares	88		1	\$99,142,183,519
iShares	209		2	\$444,299,305,841
Janus	3			\$64,788,600
John Hancock	13	1(JHSC)	1	\$95,382,228
JPMorgan Chase & Co.	2		1	\$1,898,986,827
JP Morgan ETFs	15	5(JDIV,JMIN,JMOM,JQUA,JVAL)	5	\$348,605,673
Krane Shares	7		3	\$801,383,331
LocalShares	1			\$156,340
Merk	1			\$33,761,596
Morgan Stanley	5			\$1,062,937
Nationwide	3		3	\$1,113,543
Natixis	1			\$726,577
Nuveen	3		2	\$95,161,597
Oppenheimer	7			\$160,972,599
O'Shares	7		1	\$44,793,773
PIMCO	15		3	\$2,602,049,700
Principal	1			\$266,505,954
ProShares	111	2(CLIX,EMTY)	4	\$60,708,539,350
QuantShares	5			\$7,087,772
RealityShares	1			\$12,240,436
Reaves	1			\$563,260
Renaissance Capital	2			\$4,332,616
RexShares	1			\$16,908,734
SerenityShares	1		1	\$519,739
SPDR ETFs	128		1	\$579,427,800,817
Sprott Asset Management	6			\$161,454,447
Strategy Shares	2			\$6,382,376
Swedish Export Credit (SEK)	7			\$18,988,548
Teucrium	5			\$51,609,827
Tortoise	1			\$10,949,276
UBS	41		2	\$1,024,512,290
United States Commodity Funds LLC	13		2	\$5,609,981,302
USAA	6		6	\$184,610,914
U.S. Global Investors	2		1	\$28,389,902
VanEck Vectors	53		2	\$38,422,340,239
Vanguard	49			\$84,659,023,303
VelocityShares	9		2	\$33,025,020,779
Virtus ETF Solutions	10	1(EMEM)	5	\$274,848,301
WBI	12			\$48,800,383
WisdomTree	53		1	\$8,746,597,754

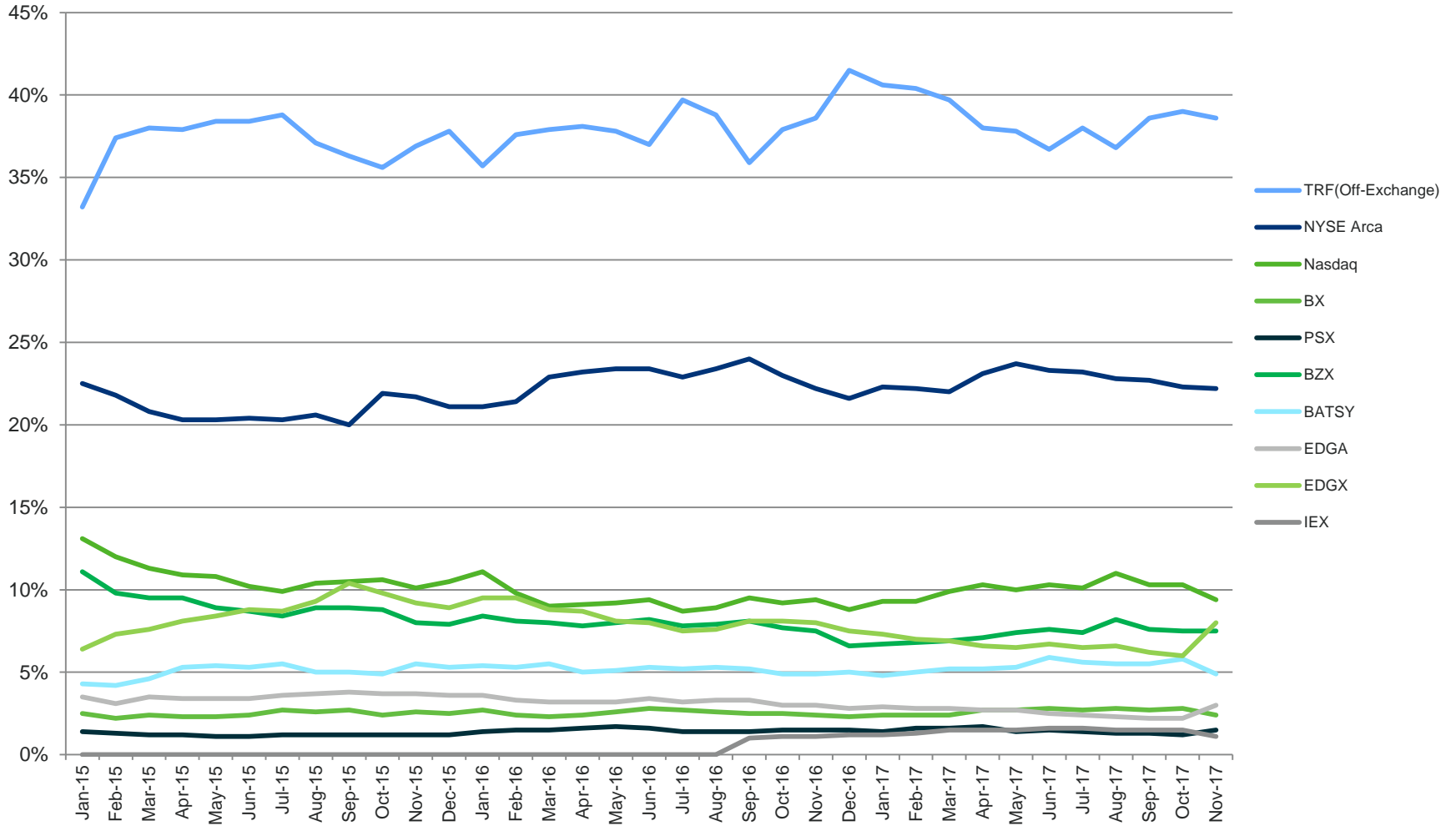


# U.S. ETF CONSOLIDATED VOLUMES



- During the month of November, U.S. ETF CADV was 1.08 billion and daily notional value was \$69.35 billion
- By the end of November, U.S. ETF share and notional volume represented 16.47% and 24.17%, respectively of all CTA issues

# U.S. ETF MARKET SHARE BY TRADING VENUE



- In November 2017, NYSE Arca led all exchanges with an ETF trading market share of 22.20%
- ETF trades occurring off-exchange in November represented 38.60%

# CONTACT US

- For more information, visit [www.nyse.com/etf](http://www.nyse.com/etf)
- Email us at: [etf@nyse.com](mailto:etf@nyse.com)

*©2017 NYSE. All rights reserved. NYSE and its affiliates do not recommend or make any representation as to possible benefits from any securities or investments, or third-party products or services. Investors should undertake their own due diligence regarding their securities and investment practices.*