



NEW YORK STOCK EXCHANGE

**U.S. EXCHANGE TRADED FUNDS
MONTHLY FLASH**

DECEMBER 2017

NYSE ARCA U.S. EXCHANGE TRADED FUNDS (ETFs)

HIGHLIGHTS FROM DECEMBER 2017

- In December, **23 new ETFs¹** listed on NYSE Arca
 - At the end of December , **1,498 ETFs** were listed on NYSE Arca
- US ETP notional volume represented **27.10%** of all CTA issues in December 2017
- US ETP daily average turnover was approximately **\$79.27** billion in December 2017
- NYSE Arca was at the NBBO **90.45%** of the time, leading all US exchanges
- NYSE Arca had **22.10%** of all US ETP trading volume, leading all US exchanges

¹ETFs include all exchange traded products

NYSE ARCA U.S. EXCHANGE TRADED FUNDS (ETFs)

Top 10 Most Actively Traded Securities in the U.S (by Turnover Volume) December

Symbol	Name	Product Type	Consolidated Trading Volume	Consolidated Turnover Volume (\$)	Average Daily Trading Volume	Average Daily Turnover Volume (\$)
SPY	SPDR S&P 500 ETF Trust	ETF	1,721,586,330	\$458,222,329,405	86,079,317	\$22,911,116,470
QQQ	PowerShares QQQ Trust, Series 1	ETF	622,383,820	\$96,938,188,967	31,119,191	\$4,846,909,448
AAPL	Apple Inc.	Stock	531,184,058	\$91,308,664,197	26,559,203	\$4,565,433,210
IWM	iShares Russell 2000 ETF	ETF	515,062,881	\$78,454,140,776	25,753,144	\$3,922,707,039
BABA	Alibaba Group Holding Limited	Stock	416,271,401	\$72,141,086,542	20,813,570	\$3,607,054,327
AMZN	Amazon.Com Inc	Stock	57,760,041	\$67,427,807,885	2,888,002	\$3,371,390,394
FB	Facebook, Inc. Class A	Stock	317,095,666	\$56,297,698,489	15,854,783	\$2,814,884,924
NVDA	Nvidia Corp	Stock	252,805,405	\$48,628,016,631	12,640,270	\$2,431,400,832
EEM	iShares MSCI Emerging Markets ETF	ETF	1,054,232,019	\$48,588,254,706	52,711,601	\$2,429,412,735
BAC	Bank of America Corporation	Stock	1,494,914,819	\$43,558,888,245	74,745,741	\$2,177,944,412

Top 10 Most Actively Traded ETFs in the U.S. (by Turnover Volume) in December

SPY	SPDR S&P 500 ETF Trust	ETF	1,721,586,330	\$458,222,329,405	86,079,317	\$22,911,116,470
QQQ	PowerShares QQQ Trust, Series 1	ETF	622,383,820	\$96,938,188,967	31,119,191	\$4,846,909,448
IWM	iShares Russell 2000 ETF	ETF	515,062,881	\$78,454,140,776	25,753,144	\$3,922,707,039
EEM	iShares MSCI Emerging Markets ETF	ETF	1,054,232,019	\$48,588,254,706	52,711,601	\$2,429,412,735
XLF	Financial Select Sector SPDR Fund	ETF	1,323,405,046	\$36,959,826,769	66,170,252	\$1,847,991,338
EFA	iShares MSCI EAFE ETF	ETF	450,296,785	\$31,529,113,778	22,514,839	\$1,576,455,689
IVV	iShares Core S&P 500 ETF	ETF	82,594,377	\$22,171,966,848	4,129,719	\$1,108,598,342
TLT	iShares 20+ Year Treasury Bond ETF	ETF	173,251,019	\$21,920,971,877	8,662,551	\$1,096,048,594
VXX	iPath S&P 500 VIX Short-Term Futures ETN due 1/30/2019	ETN	686,432,118	\$20,601,697,059	34,321,606	\$1,030,084,853
HYG	iShares iBoxx \$ High Yield Corporate Bond ETF	ETF	218,383,736	\$19,052,754,060	10,919,187	\$952,637,703

NYSE ARCA U.S. EXCHANGE TRADED FUNDS (ETFs)

New ETPs Launched on NYSE Arca in December

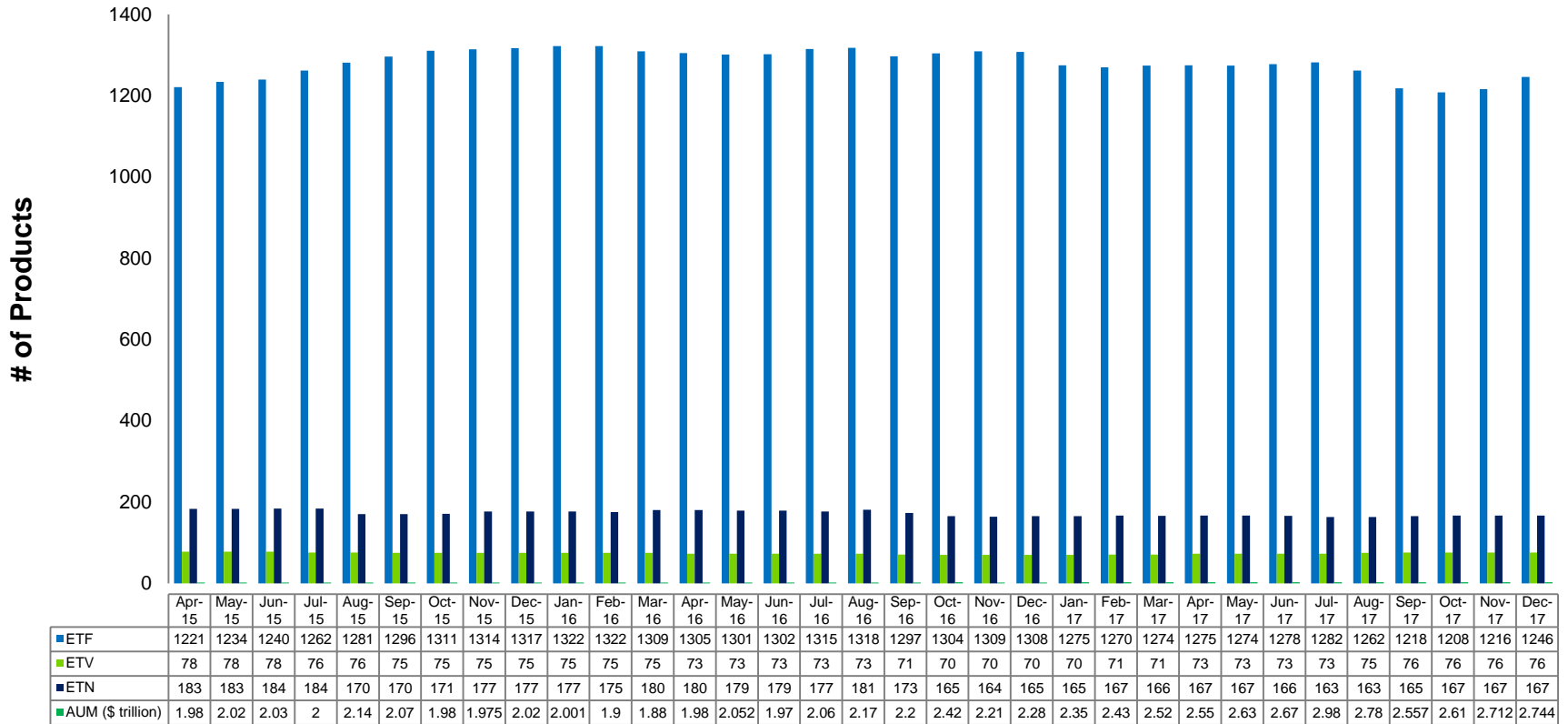
Symbol	Listing Date	Name	Product Type	Consolidated Trading Volume	Consolidated Turnover Volume (\$)	Average Daily Trading Volume	Average Daily Turnover Volume (\$)
LSST	12/28/2017	Natixis Loomis Sayles Short Duration Income ETF	ETF	900,417	\$22,546,442	450,209	\$11,273,221
XKII	12/27/2017	SPDR Kensho Intelligent Structures ETF	ETF	20,433	\$615,694	6,811	\$205,231
XKST	12/27/2017	SPDR Kensho Smart Mobility ETF	ETF	21,186	\$635,000	7,062	\$211,667
XKFS	12/27/2017	SPDR Kensho Future Security ETF	ETF	22,288	\$669,531	7,429	\$223,177
WCHN	12/21/2017	WisdomTree ICBCCS S&P China 500 Fund	ETF	11,602	\$359,025	1,934	\$59,838
WBAL	12/21/2017	WisdomTree Balanced Income Fund	ETF	3,101	\$77,555	517	\$12,926
LDRS	12/21/2017	Innovator IBD® ETF Leaders ETF	ETF	1,442,630	\$36,653,844	240,438	\$6,108,974
HMOP	12/14/2017	Hartford Municipal Opportunities ETF	ETF	255,356	\$10,263,502	23,214	\$933,046
USAI	12/13/2017	American Energy Independence ETF	ETF	113,582	\$2,850,970	9,465	\$237,581
DJPY	12/12/2017	Exchange-Traded Notes linked to the VelocityShares Daily 4X Long USD vs. JPY Index due December 6, 2032	ETN	201	\$4,974	14	\$355
DEUR	12/12/2017	Exchange-Traded Notes linked to the VelocityShares Daily 4X Long USD vs. EUR Index due December 6, 2032	ETN	935	\$22,555	67	\$1,611
DGBP	12/12/2017	Exchange-Traded Notes linked to the VelocityShares Daily 4X Long USD vs. GBP Index due December 6, 2032	ETN	201	\$4,991	14	\$357

NYSE ARCA U.S. EXCHANGE TRADED FUNDS (ETFs)

New ETPs Launched on NYSE Arca in December(con't)

Symbol	Listing Date	Name	Product Type	Consolidated Trading Volume	Consolidated Turnover Volume (\$)	Average Daily Trading Volume	Average Daily Turnover Volume (\$)
DCHF	12/12/2017	Exchange-Traded Notes linked to the VelocityShares Daily 4X Long USD vs. CHF Index due December 6, 2032	ETN	2,401	\$58,622	172	\$4,187
DAUD	12/12/2017	Exchange-Traded Notes linked to the VelocityShares Daily 4X Long USD vs. AUD Index due December 6, 2032	ETN	200	\$4,894	14	\$350
UJPY	12/12/2017	Exchange-Traded Notes linked to the VelocityShares Daily 4X Long JPY vs. USD Index due December 6, 2032	ETN	100	\$2,500	7	\$179
UEUR	12/12/2017	Exchange-Traded Notes linked to the VelocityShares Daily 4X Long EUR vs. USD Index due December 6, 2032	ETN	201	\$5,055	14	\$361
UGBP	12/12/2017	Exchange-Traded Notes linked to the VelocityShares Daily 4X Long GBP vs. USD Index due December 6, 2032	ETN	2,401	\$60,522	172	\$4,323
UCHF	12/12/2017	Exchange-Traded Notes linked to the VelocityShares Daily 4X Long CHF vs. USD Index due December 6, 2032	ETN	501	\$12,722	36	\$909
UAUD	12/12/2017	Exchange-Traded Notes linked to the VelocityShares Daily 4X Long AUD vs. USD Index due December 6, 2032	ETN	200	\$5,142	14	\$367
JPMF	12/7/2017	JPMorgan Managed Futures Strategy ETF	ETF	2,011,613	\$50,770,241	118,330	\$2,986,485
JPED	12/1/2017	JPMorgan Event Driven ETF	ETF	1,012,345	\$25,391,720	48,207	\$1,209,130
BUY	12/1/2017	USCF SummerHaven SHPEI Index Fund	ETF	22,176	\$551,697	1,056	\$26,271
BUYN	12/1/2017	USCF SummerHaven SHPEN Index Fund	ETF	1,554	\$39,707	74	\$1,891

NYSE ARCA U.S. EXCHANGE TRADED FUNDS (ETFs)



- As of December 2017, 2,108 ETFs were listed in the U.S., 1,498 of which were listed on NYSE Arca
- NYSE Arca listed ETFs have a total AUM of approximately \$2.84 trillion

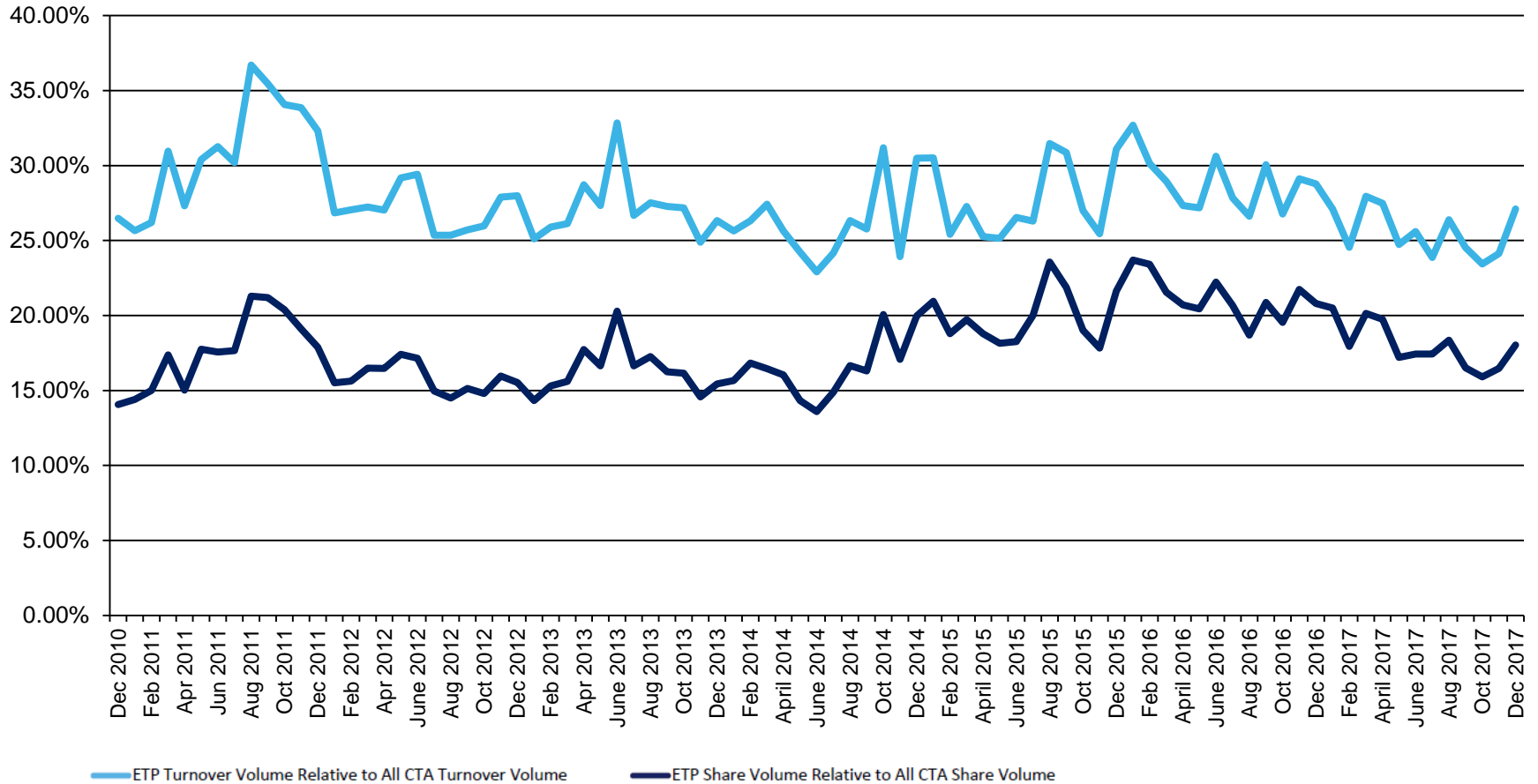
NYSE ARCA ETFs (BY ISSUER)

Issuer	# of ETFs	New in December	New YTD	Turnover
AAM	2		2	\$1,603,005
AdvisorShares	16		1	\$194,003,883
ALPS	17			\$4,676,569,878
ARK	4			\$550,459,208
ArrowShares	2			\$46,642,375
Barclays	70		1	\$21,734,912,266
Cambria	3		1	\$62,372,162
Change Finance	1		1	\$567,126
Charles Schwab	22		1	\$8,501,612,289
Citigroup	3			\$1,410,946
ClearShares	1		1	\$164,338
Columbia Management	11		1	\$104,011,943
Credit Suisse	9		2	\$107,329,312
CSOP	3			\$2,554,226
Deutsche Bank	28			\$1,751,849,277
db X-trackers	16			\$1,969,061,261
DeltaShares	4		4	\$2,559,620
Diamond Hill	1			\$3,109,907
Direxion Shares	76		9	\$32,017,716,444
EntrepreneurShares	1		1	\$6,858,175
ETF Managers Group	11		1	\$312,304,840
ETF Securities	8		3	\$373,125,082
Exchange Traded Concepts	7		1	\$633,944,063
Exponential ETFs	1		1	\$62,682
Fidelity	20			\$1,489,343,473
Fieldstone	2		2	\$5,835,250
FirstTrust	37		4	\$6,030,389,715
FlexShares	18			\$959,546,838
Franklin Templeton	26		19	\$240,788,070
Global X	34			\$2,424,028,195
Goldman Sachs	2			\$23,092,240
Goldman Sachs Asset Management	10		3	\$493,371,332
GraniteShares	3		2	\$5,606,528
Guggenheim	76		3	\$4,949,730,537
Hartford Funds	9	1(HMOP)	4	\$37,642,861
Horizons	1		1	\$5,492,527
IndexIQ	22		3	\$288,527,232
Innovator	2	1(LDRS)	1	\$210,897,040
Inspire Investing	4		4	\$9,458,355

NYSE ARCA ETFs (BY ISSUER)

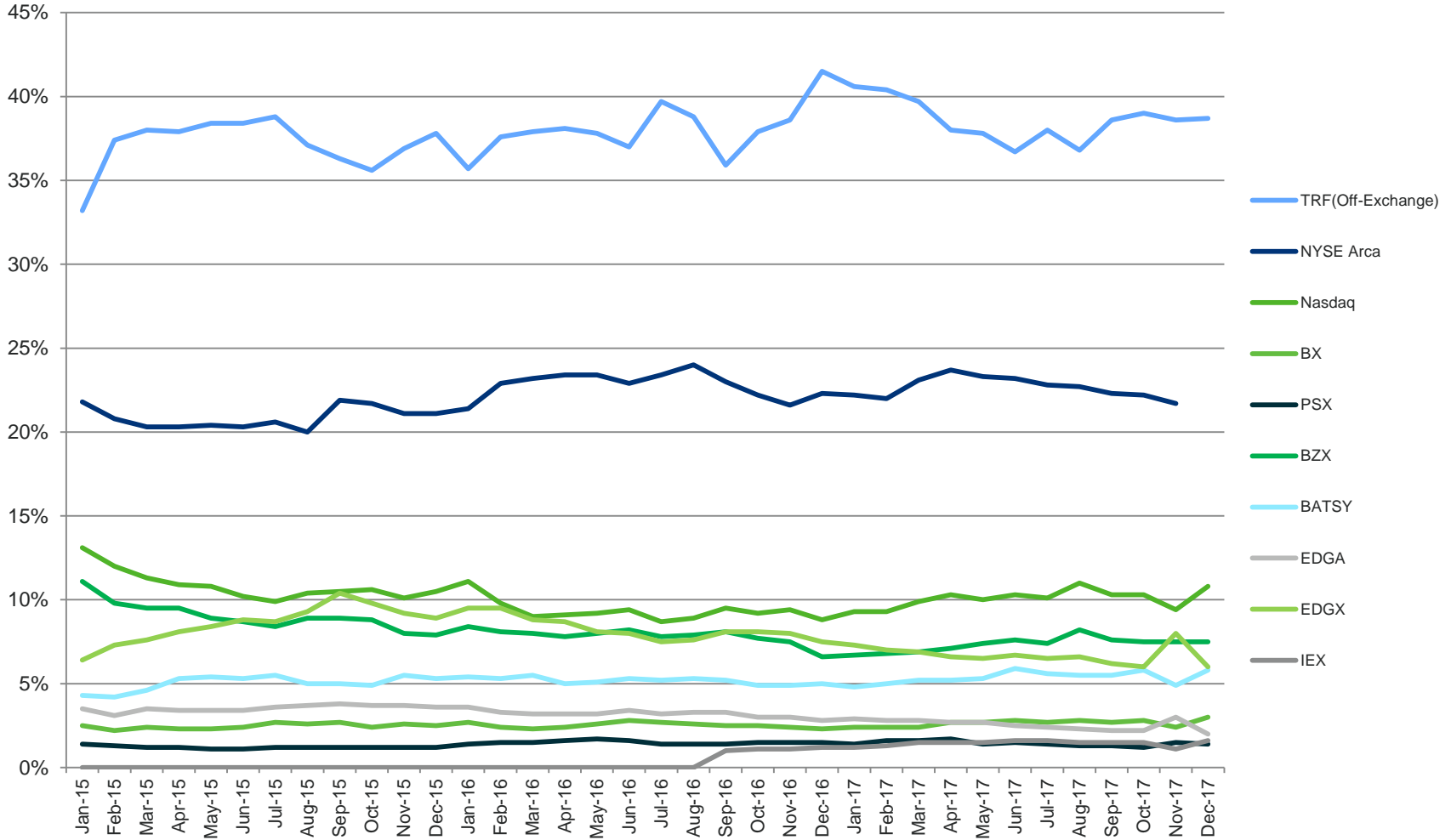
Issuer	# of ETFs	New in December	New YTD	Turnover
Invesco PowerShares	84		1	\$105,595,748,025
iShares	208		2	\$452,409,719,529
Janus	3			\$77,493,688
John Hancock	13		1	\$116,370,955
JPMorgan Chase & Co.	2		1	\$2,417,515,338
JP Morgan ETFs	17	2(JPMF, JPED)	7	\$342,776,183
Krane Shares	7		3	\$788,889,817
LocalShares	1			\$329,200
Merk	1			\$13,561,092
Morgan Stanley	5			\$3,527,387
Nationwide	3		3	\$3,601,823
Natixis	2	1(LSST)	1	\$23,840,755
Nuveen	3		2	\$18,941,871
Oppenheimer	7			\$168,933,632
O'Shares	5		1	\$205,681,447
PIMCO	15		3	\$2,355,643,009
Principal	1			\$102,847,031
ProShares	111		4	\$57,081,290,067
QuantShares	5			\$5,297,933
RealityShares	1			\$17,217,189
Reaves	1			\$883,509
Renaissance Capital	2			\$2,029,710
RexShares	1			\$23,764,280
SerenityShares	1		1	\$544,472
SL Advisors	1	1(USAI)	1	\$2,850,970
SPDR ETFs	131	3(XKII,XKST,XKFS)	4	\$699,479,445,332
Sprott Asset Management	6			\$244,501,736
Strategy Shares	2			\$9,769,857
Swedish Export Credit (SEK)	7			\$28,346,407
Teucrium	5			\$61,370,561
Tortoise	1			\$49,654,394
UBS	41		2	\$1,266,252,074
United States Commodity Funds LLC	15	2(BUY,BUYN)	4	\$4,833,851,010
USAA	6		6	\$103,045,980
U.S. Global Investors	2		1	\$31,864,889
VanEck Vectors	53		2	\$42,247,056,623
Vanguard	49			\$90,905,500,117
VelocityShares	19	10(DJPY,DEUR,DGBP,DCHF,DAUD, UJPY, DEUR,DGBP,UCHF,UAUD)	12	\$26,557,400,562
Virtus ETF Solutions	10		5	\$252,547,571
WBI	12			\$42,477,376
WisdomTree	55	2(WCHN,WBAL)	3	\$8,671,029,918

U.S. ETF CONSOLIDATED VOLUMES



- During the month of December, U.S. ETF CADV was 1.55 billion and daily notional value was \$79.27 billion
- By the end of December, U.S. ETF share and notional volume represented 18.03% and 27.10%, respectively of all CTA issues

U.S. ETF MARKET SHARE BY TRADING VENUE



- In December 2017, NYSE Arca led all exchanges with an ETF trading market share of 21.70%
- ETF trades occurring off-exchange in December represented 38.70%

CONTACT US

- For more information, visit www.nyse.com/etf
- Email us at: etf@nyse.com

©2018 NYSE. All rights reserved. NYSE and its affiliates do not recommend or make any representation as to possible benefits from any securities or investments, or third-party products or services. Investors should undertake their own due diligence regarding their securities and investment practices.